

Transmission

AUTOMATIC TRANSMISSION

WARNING



Park (**P**) should be engaged and the park brake applied when the vehicle is stationary. The vehicle can move unexpectedly with any other gear position selected, which may result in death or serious injuries to people or animals outside of the vehicle.

CAUTIONS



Never select the Park (**P**) position whilst the vehicle is in motion. Doing so may cause serious damage to the transmission.



Never select the Reverse **R** position whilst the vehicle is in forward motion. Doing so may cause serious damage to the transmission.



Never select a forward gear whilst the vehicle is in rearward motion. Doing so may cause serious damage to the transmission.

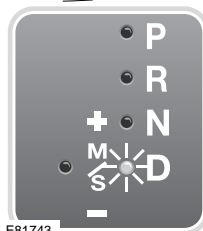
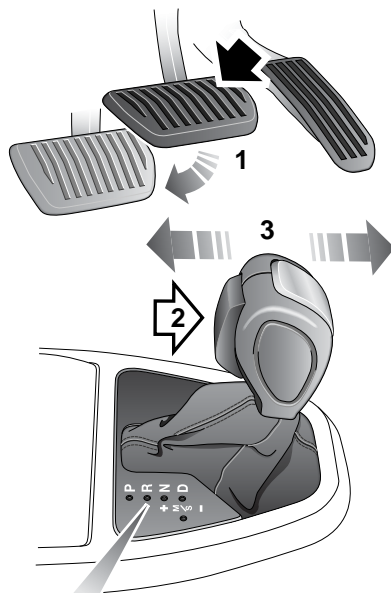


Do not rev the engine or allow it to run above normal idle speed while selecting **D** or **R**, or while the vehicle is stationary with any gear selected.



Do not allow the vehicle to remain stationary for any length of time with a gear selected and the engine running. Always select **P** or **N** if the engine is to idle for a prolonged period.

Automatic mode



E81743



To select Drive (**D**) when the vehicle is stationary :-

1. Apply the footbrake.
2. Press the gear selector release button.
3. Move the gear selector to Drive (**D**).

When in **D** the transmission will automatically select the most appropriate gear for the current driving conditions.

Transmission

Note: If pressure is applied to the selector lever before the foot brake is applied, any gear selected may not be available irrespective of the lever position. In this situation, remove pressure from the selector lever, ensure that the footbrake is applied and select the required gear.

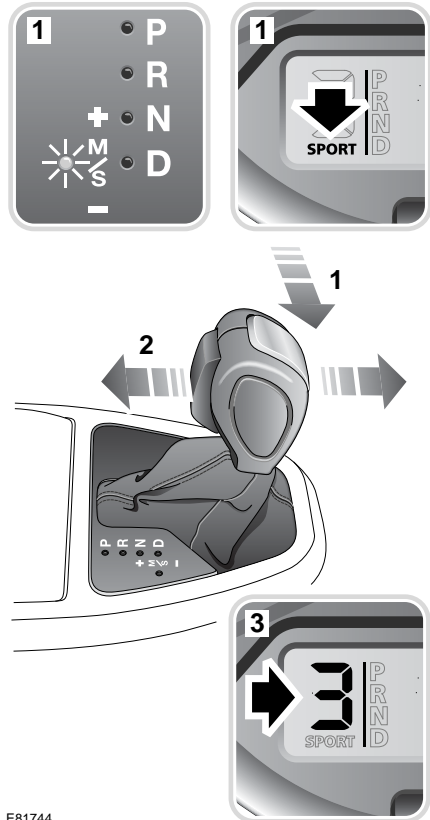
Note: When a gear is selected the vehicle may begin to move as soon as the foot brake is released.

Kick-down

When D is selected, and the accelerator pedal is depressed fully the transmission will downshift to the lowest appropriate gear. Once the accelerator pedal is returned to a normal driving position the transmission will upshift to the highest appropriate gear.

Note: Kick-down operation will vary according to road speed, current gear in use and accelerator movement.

Sport mode and CommandShift™



E81744

1. To select sport mode, move the selector lever from **D** to **SPORT**.
2. To use CommandShift, move the selector lever forward to move up a gear, and back to move down a gear.

Sport mode

When sport mode is selected (1) **SPORT** will be displayed in the message centre, and the selector indicator will illuminate.

Transmission

To return to automatic mode move the selector lever back to the Drive (D) position. The **D** on the selector display will illuminate to confirm that automatic mode has been selected.

CommandShift™

When using CommandShift the selected gear is displayed in the message centre (3).

Moving away from a stand still can be achieved using either first or second gear. This may prove useful for certain terrain, using second gear for pulling away on snow for example.

Note: *In order to protect the engine, the transmission will automatically change up to prevent over-revving, or down if the engine is labouring.*

Note: *When in CommandShift, if the vehicle comes to a complete stop the transmission will remain in second gear. First gear can be selected manually if required.*

Electronic gear change strategies

In automatic, or sport modes (not available in CommandShift) the gear change points will be adapted to suit driving conditions.

Hill ascent, towing, and high altitude

The lower gears are selected, and maintained for longer than usual. This helps overcome the loss of momentum when towing, or ascending hills. It also helps overcome the loss of engine torque when the vehicle is operating at high altitudes.

Hill descent

With HDC selected in either automatic, or sport modes, a low gear will be selected and maintained to provide maximum engine braking.

High temperatures

In circumstances where engine and transmission temperatures are raised to very high levels, the gear change strategy will alter to provide maximum cooling efficiency.

Transmission fault

In the unlikely event that a fault develops within the transmission system, **F** will be displayed in the gear position display and a warning message will appear in the message centre. A limited range of gears will be available, and you should seek qualified assistance immediately.

Transmission

TECHNICAL SPECIFICATIONS

Transmission fluids and capacities

Transmission unit	Fluid specification	Fluid capacity
Automatic gearbox	Esso JWS3309	7 litres (15 pints)
Power transfer unit	Castrol BOT118	0.75 litres (1.6 pints)
Hallex coupling	STAT OIL SL01-301	0.65 litres (1.4 pints)
Rear differential	Castrol EPX	0.7 litres (1.5 pints)