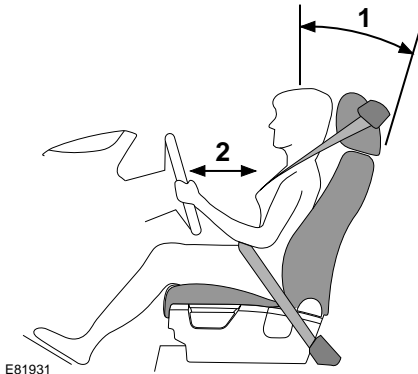


Seats

SITTING IN THE CORRECT POSITION



- Position the seatbelt so that it is mid-way between your neck and your shoulder. Fit the strap tightly across your hips, not across your stomach.
- Ensure that your driving position is comfortable, and enables you to maintain full control of the vehicle.

WARNING



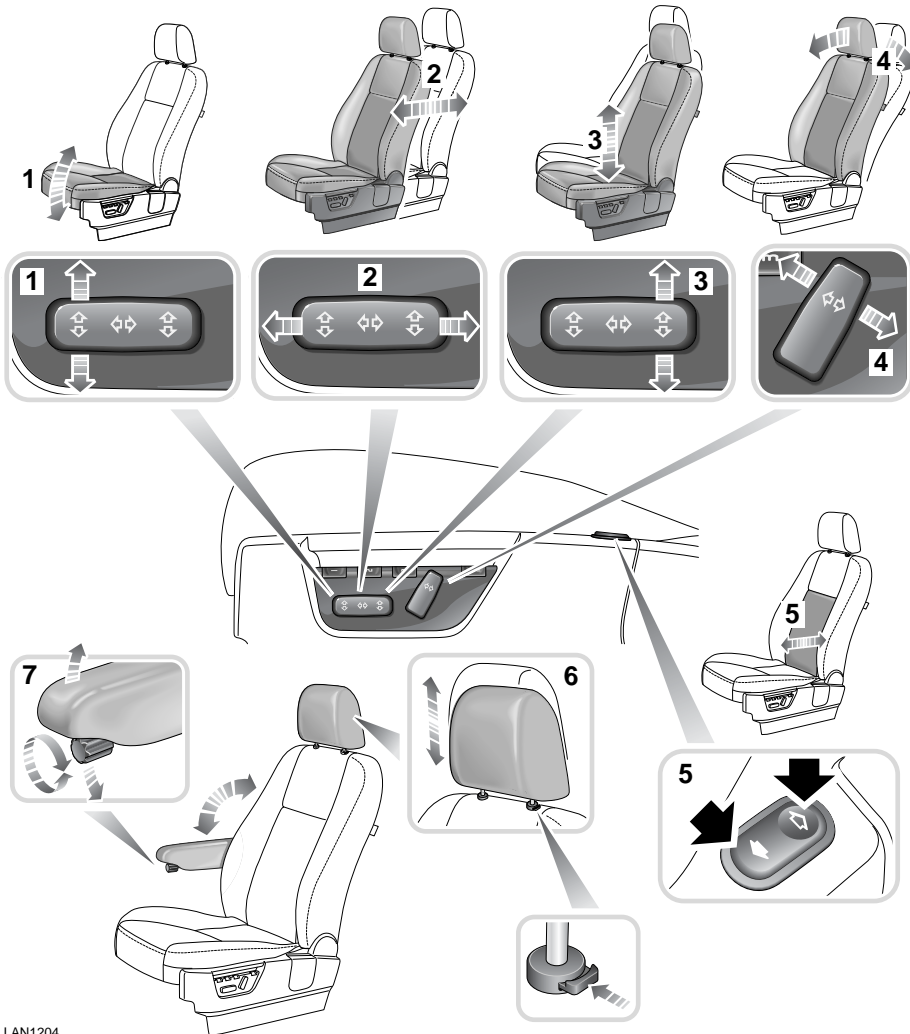
Do not adjust the seat while the vehicle is moving. Doing so could cause loss of vehicle control and personal injury.

The seat, head restraint, seat belt and airbags, all contribute to the protection of the user. Correct use of these components will give you greater protection, therefore you should observe the following points:

1. Sit in an upright position with the base of your spine as far back as possible and the seatback reclined no more than 30 degrees.
 2. Do not move the driver's seat too close to the steering wheel. Ideally, a minimum distance of 254 mm (10 inches) is recommended between the breastbone and the steering wheel airbag cover. Hold the steering wheel in the correct position with your arms slightly bent.
- Adjust the head restraint so that it's highest point is level with the top of your head.

Seats

ELECTRIC SEATS



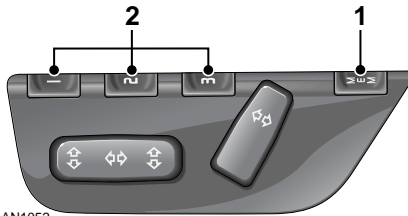
LAN1204

1. Cushion angle adjustment.
2. Fore and aft adjustment.
3. Height adjustment.
4. Seat back angle adjustment.
5. Lumbar support adjustment.
6. Head restraint height adjustment.
7. Armrest height adjustment.

Seats

Wherever possible the seats should be adjusted with the engine running. The seats also have an active period during which the seat can be adjusted. The adjustment period is initiated when the driver's door is opened/closed or the remote control is removed from the starter control unit (docking port).

Driving position memory



Once you have adjusted the power operated driver's seat and exterior mirrors for your ideal driving position, the vehicle can memorise these settings for future use.

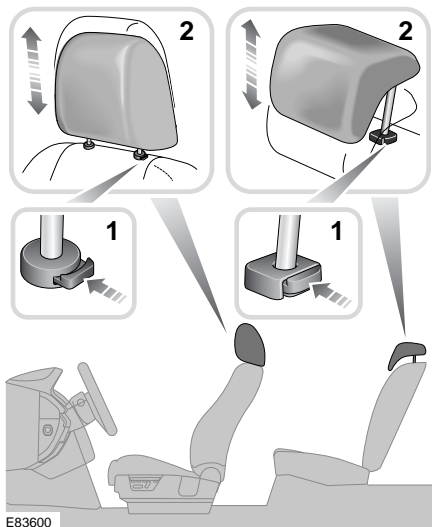
1. Press the memory store button to activate the memory function.
2. Press one of the preset buttons within five seconds to memorise the current settings. **MEMORY STORED** will be displayed on the message centre accompanied by an audible chime to confirm the settings have been memorised.
3. To recall a stored position press the relevant preset button. **MEMORY SELECTED** will be displayed in the message centre.

A seat position will only be memorised during the five second active period.

Any existing settings will be over-written when programming a memory position.


Seats


HEAD RESTRAINTS




E83600


WARNINGS

 Head restraints are designed to support the head, not the back of the neck. The restraint must be positioned correctly to restrain rearward movement of the head in a collision. An incorrectly adjusted head restraint increases the risk of death or serious injury in the event of a collision.

 Adjust the head restraint so that the top of the head restraint is above the centre line of the head. An incorrectly adjusted head restraint increases the risk of death or serious injury in the event of a collision. See **SITTING IN THE CORRECT POSITION** (page 39).

WARNINGS


 Do not drive, or carry passengers with the head restraints removed from occupied seats. The absence of a correctly adjusted head restraint increases the risk of death or serious injury in the event of a collision.


 Never adjust the head restraints while the vehicle is in motion. An incorrectly adjusted head restraint increases the risk of death or serious injury in the event of a collision.

1. Press the locking collar to release the head restraint.
2. Whilst pressing the locking collar, move the head restraint up or down to the required position.

REAR SEATS

WARNINGS

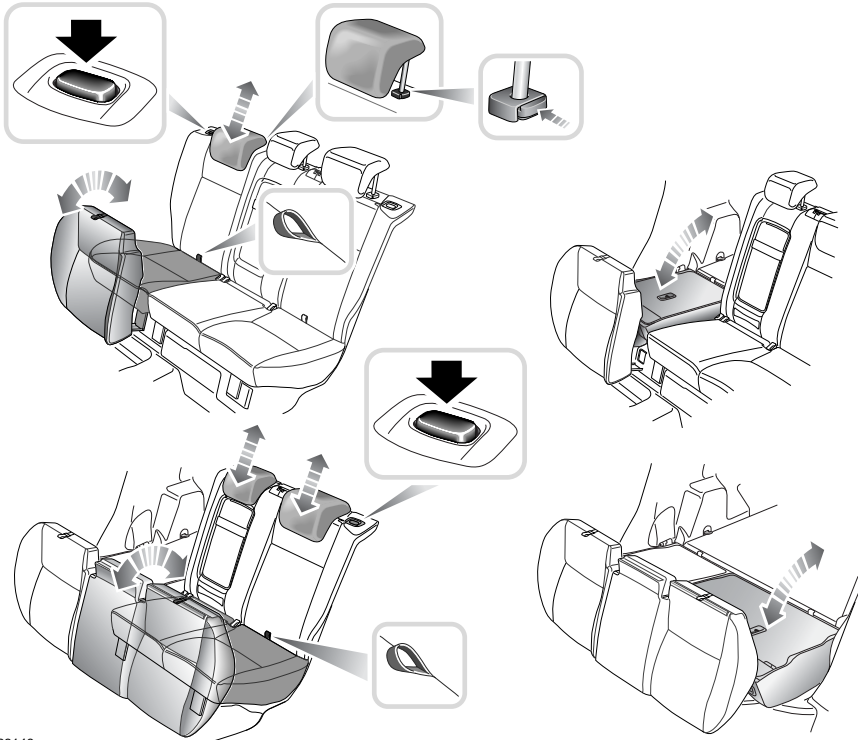
 Always ensure that objects carried within the vehicle are secured properly. Unsecured items can cause death or serious injury in the event of an impact or sudden manoeuvre.

 Never allow passengers to travel in the load space under any circumstances. All vehicle occupants should be seated correctly, and wear a seat belt at all times when the vehicle is in motion. Failure to do so will greatly increase the risk of death and serious injury in the event of an accident or heavy braking.

The split fold rear seat can be folded completely, or partially, to accommodate large loads and still retain seating for passengers.

Seats

Folding the rear seats



E83148

1. Using the loop provided at the back of the seat base, pull the back of the seat base up and forward.
2. Fully lower the head restraints.
3. Press the seat back release button, and fold the seat back fully forward.
4. If required, repeat the process for the second seat section.

Note: To achieve a completely flat load floor it will be necessary to completely remove the rear head restraints.

WARNING



Ensure that if the rear head restraints are removed they are stored securely. Never leave them loose in the vehicle, as they can cause serious injury or death in the event of an accident, heavy braking, or sudden manoeuvres.

Seats

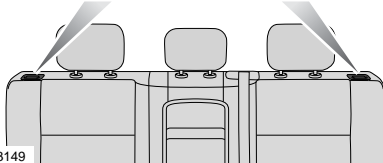
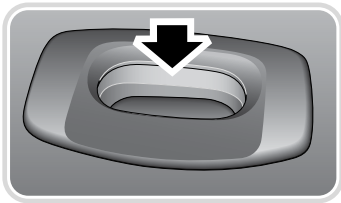
Raising the rear seats

The process for raising the rear seat is the reverse of folding.

WARNING



Ensure that when the seat back is raised the locking mechanism is fully engaged. Failure to do so can increase the risk of death or serious injury in the event of an accident or sudden manoeuvre or heavy braking.



E83149

When the seat back has been raised fully, and is locked into position, the release button will pop-up.

Note: The red warning section will only be visible if the seat back has not been locked into position.

HEATED SEATS



Note: To prevent the battery from becoming discharged the seat heaters will only operate when the engine is running.

The seat heaters will maintain a factory set temperature, and have two levels of operation, high, and low. There are two indicators in each switch, if both are on the setting is high, if only one is on the setting is low.

To operate:-

1. Press once to turn on to high.
2. Press again to change the setting to low.
3. Press a third time to switch off.