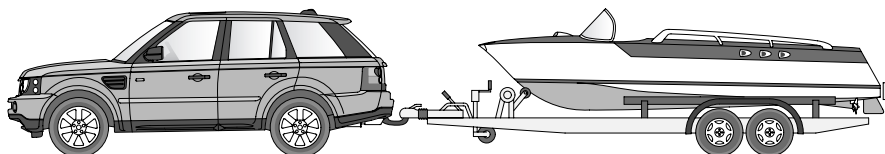



Towing


TOWING A TRAILER




E90953

WARNINGS

 To preserve vehicle handling and stability, only fit towing accessories that have been designed and approved by Land Rover.

 Do not use lashing points or vehicle recovery towing points to tow a trailer. Use of the towing eyes for purposes other than their designed intention could result in damage or injury.

CAUTION

 An equalising or other form of weight distributing hitch should not be used with your vehicle.

The torque ranges of Land Rover engines allow maximum-weight loads to be pulled smoothly from standstill and reduce gear changing on hills or rough terrain.

It is the driver's responsibility to ensure that the towing vehicle and trailer are loaded and balanced, so that the combination is stable when in motion. When preparing your vehicle for towing, pay attention to any instructions provided by the trailer manufacturer as well as to the information that follows.



The trailer warning indicator lamp illuminates as a bulb check when the starter switch is turned to position II and extinguishes when the engine is started.

If the lamp does not flash with the direction indicators, the trailer bulb may be faulty.

Points to remember


- When calculating the laden weight of the trailer, remember to include the weight of the trailer plus the load.
- To ensure that the towing hitch is at the correct height before balancing the combination ensure that:
 - All doors are closed.
 - The engine is running.
 - On-road ride height is selected.
- Where the load can be divided between trailer and tow vehicle, loading more weight into the vehicle will generally improve the stability of the combination.
- Towing regulations vary from country to country. Always ensure national regulations governing towing weights and speed limits are observed (refer to the relevant national motoring organisation for information).

Note: When towing do not exceed 100 km/h (60 mph), or 80 km/h (50 mph) when the temporary spare wheel is in use.

Towing

Vehicle weights


WARNING

 In the interest of safety, the gross vehicle weight, maximum rear axle weight, maximum trailer weight and tow hitch load (tongue weight) must not be exceeded.

Exceeding allowable vehicle and axle loads will increase the risk of tyre and suspension failure, increase vehicle brake stopping distance and adversely affect vehicle handling and stability. This may result in a crash or rollover.

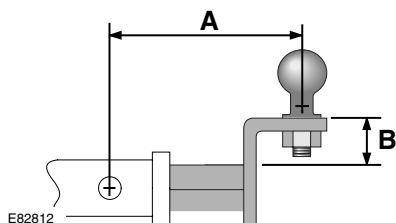
Tongue weight

WARNING

 The tongue weight, plus the combined weight of the vehicle's load carrying area and rear seat passengers, must never exceed the specified maximum rear axle load.

Trailer hitch

The optional trailer hitch receiver is rated as a Class III. When selecting a drawbar for the receiver, the following dimensions must be adhered to:



Note: A drawbar of 228 mm (9 in.) length with a rise of 38 mm (1.5 in.) is recommended for use with the Land Rover approved towing hitch.

Consult your Dealer for the most up-to-date information.

GEAR CHANGING

To avoid overheating the gearbox, it is not advisable to tow heavy trailer loads at speeds of less than 32 km/h (21 mph) using the main gearbox in high range. Select low range instead.

LEVELLING

To optimise stability, make sure the trailer is level with the ground, and with the towing hitch and trailer drawbar set at the same height. See **TOWING A TRAILER** (page 171). This is particularly important when towing twin axle trailers. Set the height of the drawbar hitch point so that the trailer is level when connected to the loaded vehicle.


Towing

ESSENTIAL TOWING CHECKS

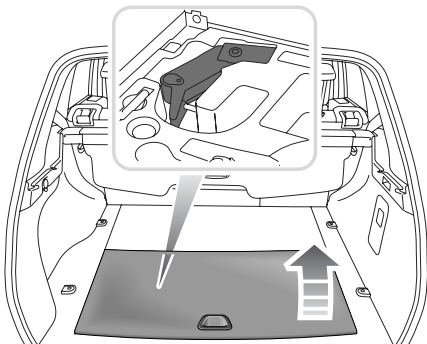
Tire pressures	Increase rear pressures of towing vehicle to those for Maximum Gross Vehicle Weight conditions.
Tongue weight	If the vehicle is loaded to the Gross Vehicle Weight (GVW), the tongue weight is limited to 150 kg (330 lb). If a greater tongue weight is necessary (up to 250 kg (550 lb) maximum), vehicle load should be reduced to ensure the GVW and rear axle weights are not exceeded.
Breakaway cable or secondary coupling	A breakaway cable or secondary coupling must be attached. If the trailer/caravan is fitted with brakes, it is usual for an attached breakaway cable to operate the brakes in the event of the coupling becoming detached. See your trailer manufacturer's literature. If your trailer does not have a breakaway cable, a secondary coupling must be attached. Use a suitable point on the towing bracket to securely attach the coupling. It is not advisable to loop cables or couplings around the neck of the tow ball as they could slide off.

TOW BALL STORAGE

WARNING

 When handling the tow ball, hold the bottom of the component. Locking into position occurs automatically and causes the locking lever to rotate under spring pressure.

The tow ball is stowed under an access cover in the loadspace floor.

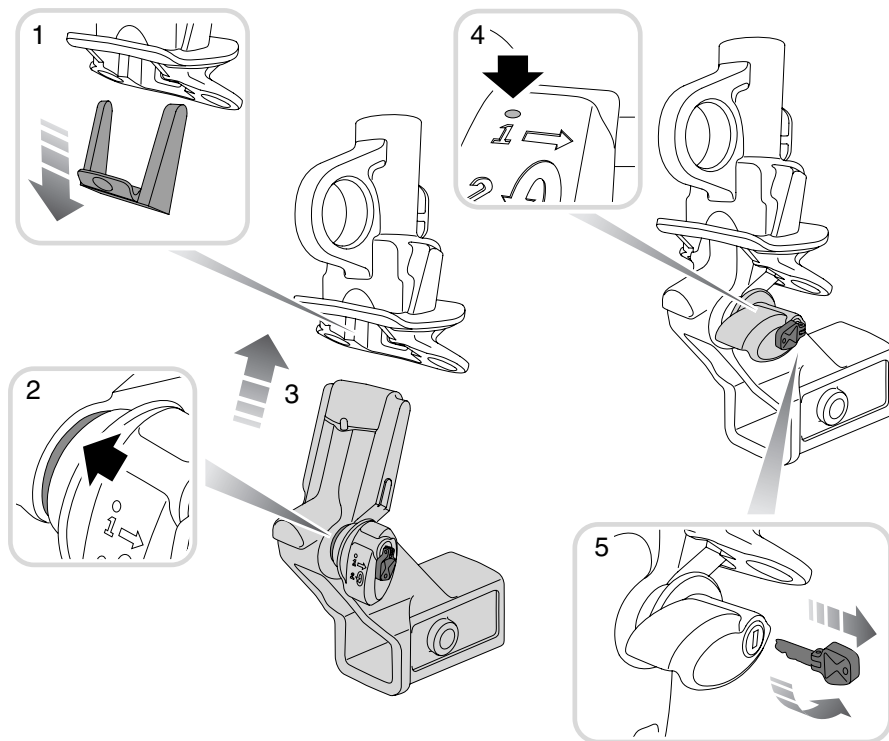


E92645

Towing

DETACHABLE TOW BALL

Fitting the tow ball

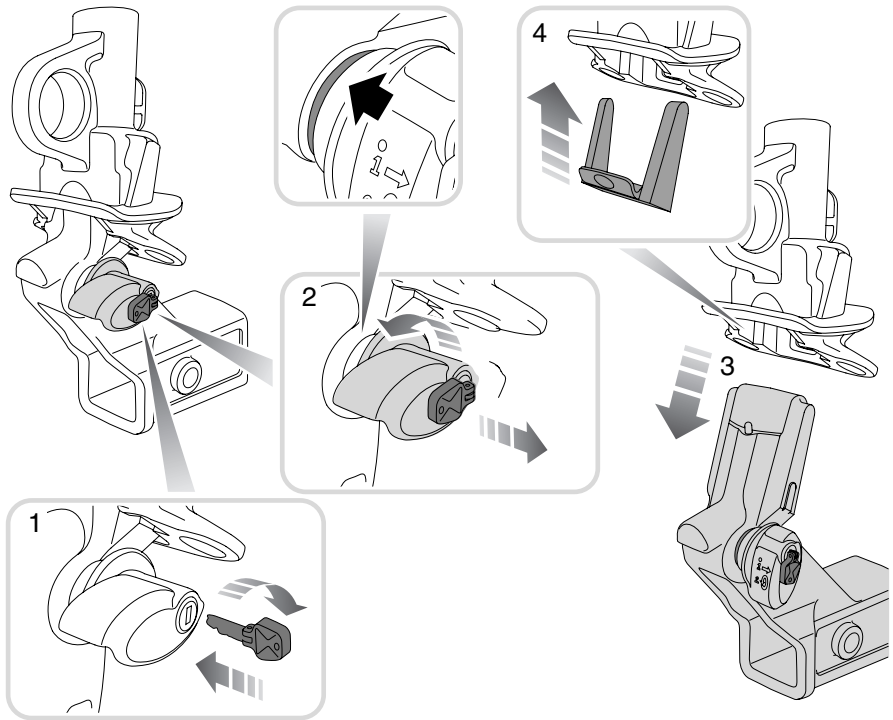


E80895

1. Remove the protective cover from the tow ball mounting and stow it in the tow ball storage area.
 2. The tow ball can only be installed when the green locking lever is in the unlocked position.
 3. Insert the tow ball into the mounting and push firmly upwards until the tow ball locks into position.
 4. The red marker should be completely covered by the green locking lever.
 5. Turn the key counterclockwise to lock the tow ball. Remove the key and store in a safe place.
- The tow ball must be locked in position before towing.

Towing

Removing the tow ball



E80896

1. Insert the key and turn it clockwise to unlock the tow ball.
2. Pull the handle outwards and rotate counterclockwise until a click is heard. The marker on the handle should show red.
3. Carefully lower the tow ball and place it in its stowage area and fully secure it.
4. Fit the protective cover on the tow ball mounting. Press the bottom of the cover to fix it in position.

Store the tow ball in the stowage area when not in use.

Towing

RECOMMENDED TOWING WEIGHTS

Towing weights

Maximum permissible towed weights	On-road	Off-road
Unbraked trailers	750 kg (1 654 lb)	750 kg (1 654 lb)
Trailers with overrun brakes	3 500 kg (7 716 lb)	1 000 kg (2 205 lb)
Nose weight	250 kg (550 lb)	250 kg (550 lb)

Maximum towing/load limits

Gross Train Weight (Weight of vehicle plus trailer with overrun brakes)		
Normally aspirated engines	6 570 kg	14 484 lb
Supercharged engines	6 625 kg	14 605 lb
Roof load (including the weight of roof rack)	75 kg	165 lb

Note: *The gross vehicle weight must not be exceeded.*