

Keys and remote controls

PRINCIPLE OF OPERATION



E81023

You have been supplied with two remote controls, with integral keys, to operate all the vehicle's locks.


The operation of all buttons on all remote controls, will be inhibited while a key is in the starter switch.

Note: *Interference from other radio equipment, operating on a similar frequency may affect the remote control. If this happens, operate the remote control as close as possible to the vehicle or use the key.*

Note: *If the remote control fails to work even when close to the vehicle, it may not be synchronised with the system. If the remote control still fails to operate, unlock the vehicle manually. See **USING THE KEY** (page 40). Start and run the engine for six minutes to synchronise.*

Remote control battery

CAUTION

 The remote control contains delicate electronic circuits and must be protected from impact, water damage, high temperatures and humidity, direct sunlight and the effects of solvents, waxes and abrasive cleaners.

The battery is rechargeable. If the battery needs recharging the following will occur:

- **KEY BATTERY LOW** will be displayed in the main message centre.
- A gradual deterioration in range and performance will be noticed.

To recharge the battery, insert the key in the starter switch and start the engine.

Compliance

The remote control complies with part 15 of the FCC rules. Operation is subject to the following conditions:

- This device may not cause harmful interference.
- This device must accept any interference received, including interference that may cause undesired operation.

Any changes or modifications to the remote control not expressly approved by the manufacturer or Land Rover North America could void the user's authority to operate the equipment.

Transmitter FCC ID: NT8-15K6014CFFTXA

Receiver FCC ID: LQN5752

Keys and remote controls

PROGRAMMING THE REMOTE CONTROL

The Land Rover button on the remote control can be programmed to operate any one of the following functions:

- Panic alarm.
- Headlamp courtesy delay.
- Air suspension control.
- Tailgate release.
- Tailglass release.

The currently-programmed feature will be activated when the reprogramming sequence is started.

The button is disabled when the key is in the starter switch.

Panic alarm

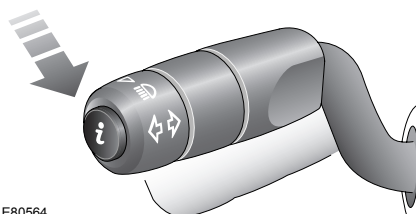


Press and hold the Land Rover button and press the hazard warning switch. A chime will confirm the feature is programmed.

The alarm will sound and the hazard warning lamps will flash when the button is pressed.

Press the lock or unlock buttons or insert the key in the starter switch, to switch off the alarm.

Headlamp courtesy delay



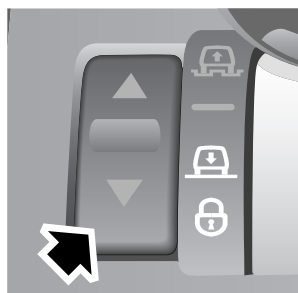
E80564

Press and hold the Land Rover button and flash the headlamps. A chime will confirm successful programming.

A short press of the Land Rover button will turn on the headlamps for the length of time specified in Settings. See **TRIP COMPUTER** (page 99).

A second press of the button after three seconds, will deactivate the lamps.

Air suspension control



E90801

Press and hold the Land Rover button and press the suspension raise/lower switch. A chime will confirm the feature is programmed.

Programming of this function must be done within one minute of switching off the engine.

Before attempting to raise or lower the suspension, turn on the hazard warning lamps and close all the doors.

Keys and remote controls

To raise the suspension, press and hold the Land Rover button and the lock button.

To lower the suspension, press and hold the Land Rover button and the unlock button.

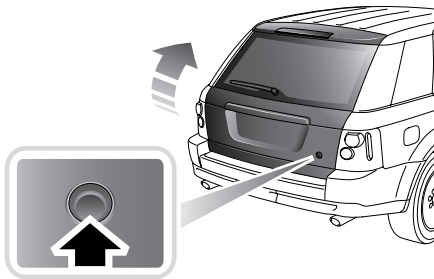
If any button is released during the raising or lowering, all movement will stop, until the buttons are pressed again.

Initially the height will change slowly, but will increase after three seconds.

While the height is changing, a symbol on the raise/lower switch will be lit, according to the direction of movement. See **ADJUSTING THE SUSPENSION** (page 158).

If the suspension is not set to On-road height, all movement will stop when On-road height is reached. Release the buttons and press again, to continue. See **ADJUSTING THE SUSPENSION** (page 158).

Tailgate release

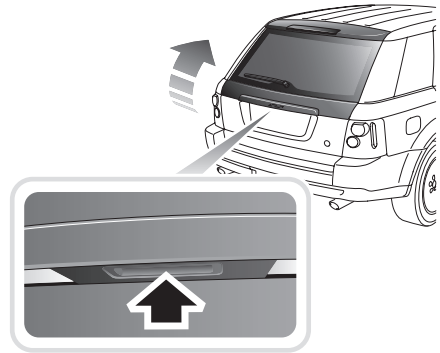


E90784

Press and hold the Land Rover button while pressing the tailgate release button on the tailgate. A chime will confirm the feature is programmed.

A short press of the button will now release the vehicle's tailgate.

Tailglass release



E91961

Press and hold the Land Rover button while pressing the tailglass release button located on the underside of the exterior handle. A chime will confirm the feature is programmed.

A short press of the button will now release the vehicle's tailglass.

Single-point entry

This feature enables the driver's door to be unlocked, while leaving the other doors locked.

Single-point entry can be disabled on individual remote control keys, by pressing and holding the lock and unlock buttons for three seconds. All doors will now unlock with a single press.

Repeating the procedure above will re-enable single point entry.

Each time single-point entry is enabled or disabled, the vehicle will lock then unlock into the selected mode.

Keys and remote controls

GENERAL INFORMATION ON RADIO FREQUENCIES

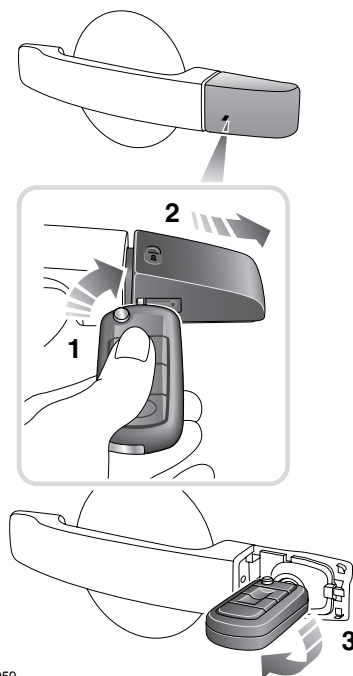
Note: The radio frequency used by your remote control may be used by other devices. For example, amateur radios, medical equipment, wireless head phones or other remote control devices. This may cause the frequency to be jammed and prevent your remote control from operating correctly.

Environmental conditions can affect the operation of remote controls, and the operating range may vary considerably depending on the vehicle's location.

USING THE KEY

Emergency locking and unlocking

Under a removable cap on the left front door outer handle, there is an emergency-use door lock.



E91959

1. Insert the key fully into the slot under the cap and turn clockwise to release the forward edge of the cap.
2. Remove the cap and withdraw the key.
3. Insert the key into the emergency lock, and turn counterclockwise to unlock.

If the alarm is armed, it will sound when the door is unlocked. Insert the key in the starter switch to stop the alarm.

To lock the vehicle in an emergency, reverse the steps above.