

The **WiFi Hotspot** screen also allows you to adjust basic system settings. More advanced settings, including changing your security password and Access Point Name (APN) configuration, can be carried out by accessing the Wi-Fi hotspot router menu on your mobile device.

To access the Wi-Fi hotspot router menu:

- From the **WiFi Hotspot** screen, select **Help**.
- The Wi-Fi hotspot router address will be displayed on the Touch screen. Copy this address into your mobile device's Internet explorer browser.

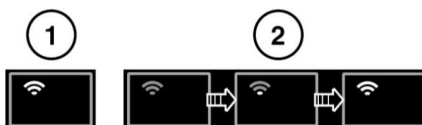
The Wi-Fi hotspot router menu will now be displayed on your mobile device. Log in using your InControl account details.

Wi-Fi icons



E154367

1. 3G mobile phone network connectivity.
2. 2G mobile phone network connectivity.
3. Connecting.
4. No mobile phone network connection.



E154365

1. Wi-Fi hotspot on.
2. Wi-Fi hotspot initialising.

INCONTROL APPS



In the interests of safety, operate, adjust or view the system only when it is safe to do so.



Do not adjust the Touch screen controls, or allow the system to distract the driver, while the vehicle is moving. Driver distraction can lead to accidents, causing serious injury or death.

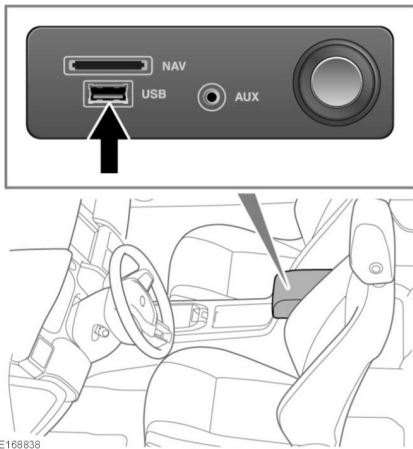
InControl™ Apps allows you to view and operate approved Smartphone apps through the vehicle's Touch screen.

Before using InControl Apps, you will need to download the InControl Apps Smartphone App. For Apple's iPhone®, this can be downloaded from the Apple App Store. For android phones, this can be downloaded from Google Play.

Note: Not all Smartphones are compatible with InControl Apps. Check the list of compatible Smartphones and supported apps in the Owners section of www.landrover.com.

Note: To establish a connection to the vehicle, the Smartphone must be unlocked and connected to the USB port.

Note: Make sure that all phone covers and cases are in the open position. Closed covers or cases may cause the phone to become locked and; therefore, prevent connection to InControl Apps.



Note: Apple, iPhone, is a trademark of Apple Inc, registered in the U.S. and other countries. App Store is a service mark of Apple Inc.

To initiate InControl Apps, connect your Smartphone, using your Smartphone's USB cable, to the USB port located in the centre cubby box.

Note: iPhone users: When prompted by the phone, you must give permission to allow the App to open.

Note: Android phone users: When prompted by the phone, you can give permission to always allow the App to open.

Once connected, select **InControl Apps** from the Touch screen's **HOME** menu. You can navigate to the InControl Apps feature on your vehicle and any compatible apps will be displayed on the vehicle's Touch screen. You can now open and operate these apps using the vehicle's Touch screen.

Note: If the ignition or the engine is switched off, the Bluetooth connection between the phone and the vehicle will be disconnected. To reconnect the phone to the vehicle via Bluetooth, see **161, PAIRING AND CONNECTING A BLUETOOTH® PHONE OR DEVICE.**