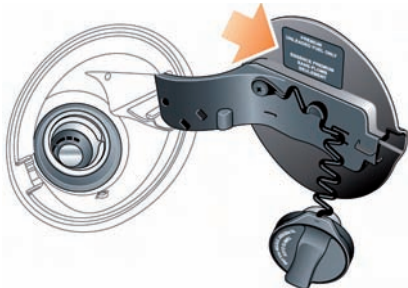


## Refuelling



The fuel filler flap is located on the right side of the vehicle. If the vehicle is locked, the filler flap cannot be opened.

Pull the flap at the rear edge to open.

Twist the cap counter-clockwise to release.

A hook is provided on the flap to hold the cap out of the way while refuelling.

After refuelling, tighten the cap until it clicks 3 times.

The correct fuel specification for your vehicle is shown on the inside of the fuel filler flap.

- **DO NOT** use E85 fuels (85% ethanol content). Equipment necessary for the use of fuels containing more than 10% ethanol is not fitted to this vehicle. If E85 fuels are used, serious engine and fuel system damage will occur.

- **DO NOT** use RME (bio-diesel), except in the case of those proprietary diesel fuels which contain a mix of up to 7%. Land Rover can accept no responsibility for damage caused by using RME in concentrations greater than 7%.

- For diesel vehicles, use diesel fuel to specification EN 590 with a maximum bio-diesel mix of 7%.

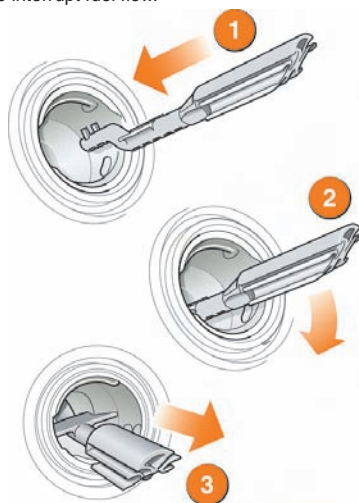
### Filling with the wrong fuel

If the vehicle is filled with the wrong type of fuel:

- **DO NOT** start the engine!
- Call for qualified assistance!

## Diesel misfuelling prevention

To help protect against a diesel fuel tank being accidentally filled with petrol, a prevention device is fitted in the filler neck. It will activate if the wrong type of fuel nozzle is fully inserted. The narrow fuel nozzle associated with unleaded petrol pumps will cause a flap to close and so interrupt fuel flow.



To reset the misfuelling device:

1. Insert the reset tool with the teeth uppermost, as far as it will go into the filler neck.
2. Locate the teeth by pushing down the top of the reset tool.
3. With the top of the tool pressed down and the teeth engaged, slowly pull the tool out of the filler neck to reset the device.

## Tyre pressure label

Tyre pressures are displayed on a label attached to the pillar behind the driver's door, or on the rear edge of the driver's door.