

## Transmission

1. With the engine running and the foot brake applied, press in the selector release button. Move the transmission selector from **P** position.

### Automatic gear selection

Select **D** for fully automatic gear changes. The LED to the left of **D** will illuminate.

### Sport mode

This is an automatic gear change mode, however, change points are modified to make full use of engine power.

2. When the transmission selector is moved to the left side, the **M/S** LED will illuminate and the Message centre will display **SPORT**.

To return to automatic gear selection, move the transmission selector back to **D**.

### CommandShift™ gear selection

This is an alternative to the automatic modes and is effective when rapid acceleration and engine braking are required.

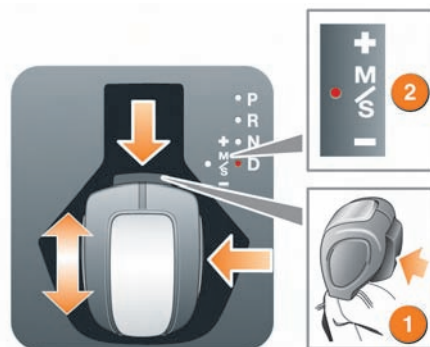
With Sport mode selected, move the selector forward or back for manual gear selection. After each gear change, the selector returns to the central position. The Message centre will display the selected gear.

To return to automatic gear selection, move the selector back to **D**.

### Gear shift indicator



When CommandShift is selected, the indicator will illuminate briefly in the Instrument panel at the recommended point for a gear change upshift.



### Operating note

If Terrain response is fitted, Sport mode is available only when the General program is selected.

With the selector in Sport position, the transmission will stay in lower gears for longer, with downshifts occurring more readily. Fuel consumption will be adversely affected.

## Terrain response *See page 2, item 20.*

When the vehicle is started, Terrain response will normally start in its **General** program.

Program selection is via a centre console switch.



Use the switches to select a program. Icons will illuminate as selected. The Message centre will also display an icon.

It is recommended that a special program be engaged whenever driving conditions are difficult and then moved back to the **General** program once those conditions are no longer present.



**General.** Use for typical road surfaces.



**Grass-Gravel-Snow.** Suitable for surfaces which are firm but have a slippery surface, e.g., grass, snow, loose gravel, pebbles, or icy conditions.



**Mud-Ruts.** Suitable for soft, muddy, uneven, or rutted ground.



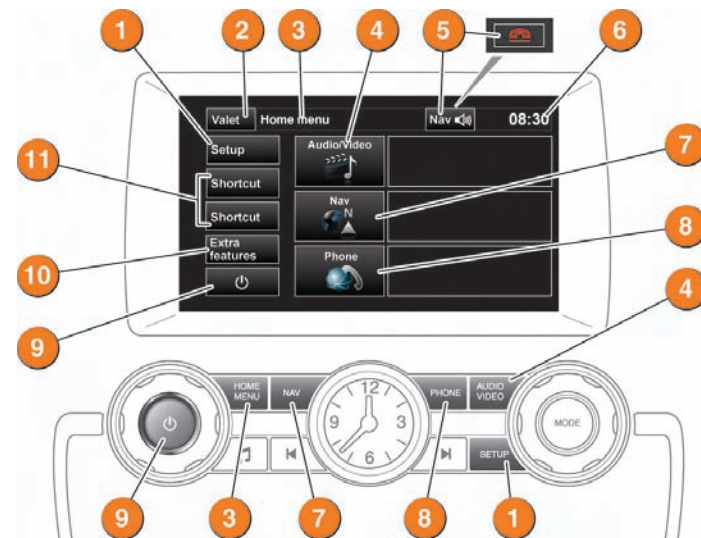
**Sand.** Suitable for soft, predominantly dry, yielding, sandy ground, e.g., sand dunes and deserts. If the sand is damp or wet, the Mud-Ruts program may be more beneficial.

### Wading

Select the program most suitable for the surface beneath the water. DO NOT exceed 500 mm (20 inches) water depth.

## Touch screen *See page 2, item 2.*

The Touch screen requires only light touches. Excess pressure could result in damage.



1. Touch or press to select the Touch screen **Setup** menu.

2. Touch to select **Valet** mode. During menu mode, the icon is changed to the back soft key. Touch to return to the previous screen displayed.

3. Touch or press to select the **Home** menu.

4. Touch or press to select the **Audio/Video** menu.

5. While navigation is operating, touch to repeat the last given navigation instruction. During a phone call, the icon is changed. Touch to end the call.

6. Touch to adjust the time/date.

7. Touch or press to select the On road Navigation menu. The current set destination is displayed.

8. Touch or press to select the **Phone** menu.

9. Touch or press to turn the screen on/off.

10. Touch to select the **Extra features** menu.

11. Touch to select **Home** menu shortcuts.