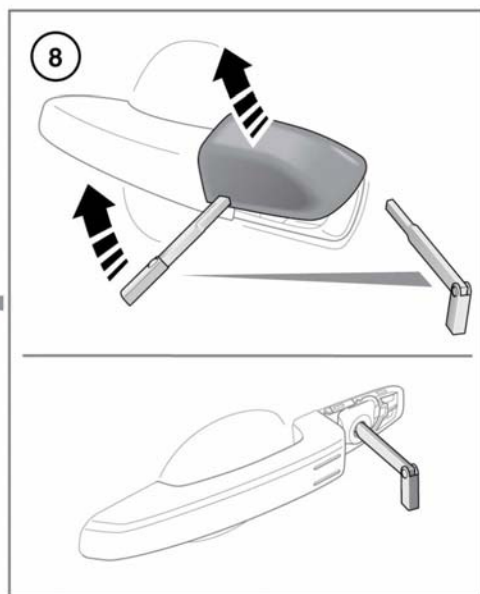
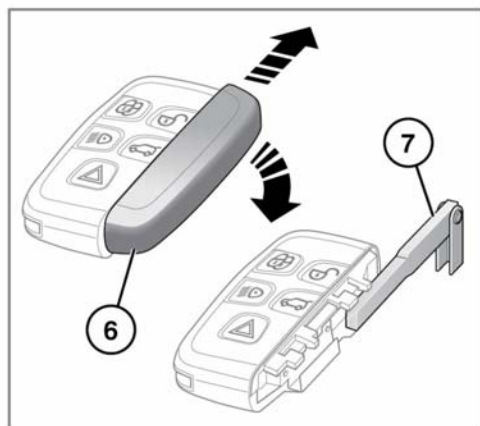
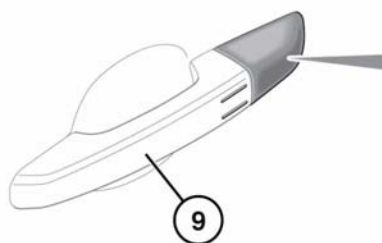
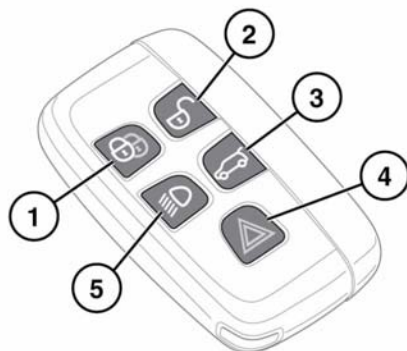


## UNLOCKING THE VEHICLE



E140776

# Entering the vehicle



Any person fitted with an implanted medical device should make sure that the device is kept at a distance of at least 22 cm (8.7 inches) away from any transmitter mounted in the vehicle. This is to avoid any possibility of interference between the system and the device.

Interference may cause the implanted medical device to malfunction, causing serious injury or death. For more information on the locations of the security system transmitters, see 265, **REMOTE KEY FOB TRANSMITTER LOCATIONS**.



To prevent accidental or unauthorised operation, never leave the Smart key unattended in the vehicle. Never leave children or animals unattended in the vehicle. The vehicle can be operated when the Smart key is inside the vehicle.

**Note:** The operational range of the Smart key will vary considerably depending on atmospheric conditions and interference from other transmitting devices.

**Note:** If any door or the tailgate is locked or unlocked 10 times within a short period, the latch is disabled for approximately 1 minute.

The vehicle is supplied with 2 Smart keys. The Smart keys act as remote controls for the locking and alarm system and allow the vehicle to be locked, unlocked and driven without the use of a conventional key. See 8, **KEYLESS ENTRY**, 14, **KEYLESS LOCKING** and 97, **STARTING THE ENGINE**. Each Smart key also has an emergency key housed in a slide out compartment.

## 1. Lock:

- Press to secure the vehicle. The vehicle can be Single or Double locked. See 13, **SINGLE LOCKING** and 13, **DOUBLE LOCKING**.

Also see, 14, **GLOBAL CLOSING**.

## 2. Unlock:

- Press briefly to unlock the vehicle and deactivate the alarm. The hazard warning lamps will flash twice to indicate that the vehicle is unlocked and the alarm has been deactivated. The exterior lamps, interior lamps and approach lamps will illuminate to assist entry to the vehicle. Also see 8, **GLOBAL OPENING**.

## 3. Tailgate release/stop/reverse direction/close:

- Press briefly to open/close the tailgate. If the vehicle is locked and armed, the perimeter alarm will remain active while the tailgate is open, but intrusion and inclination sensing systems will be disabled for the duration that the tailgate is open.

When closing the tailgate, if the vehicle is already locked and armed, the hazard warning lamps will flash after a few seconds to confirm the full alarm system has been reactivated. There will also be an audible sound if the vehicle was double locked. See 9, **OPENING AND CLOSING THE TAILGATE**.

**Note:** Make sure that the Smart key does not remain in the vehicle before closing. If the vehicle is in an area of localised Radio Frequency (RF) interference or the Smart key is shielded by metal objects, the vehicle may close and lock with no means of opening again.

## 4. Panic alarm:

- Press and hold for 3 seconds (or press 3 times within 3 seconds) to activate the horn and the hazard lamps.
- Once active for more than 5 seconds, the alarm can be cancelled by pressing the button and holding for 3 seconds (or pressing 3 times within 3 seconds).
- The emergency alarm will also be cancelled if a valid Smart key is present when the START/STOP button is pressed.

## 5. Approach illumination:

- When approaching the vehicle during darkness, press to switch on the approach illumination. Press again to turn the approach lamps off.

**Note:** In some markets a second press of the button will turn on the headlamps and reversing lamps. A third press will be required to turn the lamps off.

- The approach illumination period set at the factory is 30 seconds. This delay period may be configured to provide illumination lasting between 0 and 240 seconds. See **46, INSTRUMENT PANEL MENU**.

## 6. Emergency key access: Slide open the side cover to release, then remove.

## 7. Remove the emergency key blade and unfold.

## 8. If the Smart key fails to open the vehicle, insert the key blade into the slot at the base of the driver's door lock cover and gently lever the key blade upwards. Carefully rotate the door lock cover upwards, to lever the cover off the retaining clips. Insert the key blade into the exposed lock and turn to operate the lock. The alarm will sound.

**Note:** When the driver's door is unlocked using the key blade, the alarm will sound until the Smart key is positioned correctly.

**Note:** A replacement Smart key can be obtained only from a Land Rover Dealer/Authorised Repairer. The Land Rover Dealer/Authorised Repairer will require proof of identification and ownership.

Notify a Land Rover Dealer/Authorised Repairer immediately if a Smart key is lost or stolen.

## 9. Keyless entry/exit:

- Exterior door handles have separate unlock and lock sensors. The unlock sensor is located on the inner surface of the handle.

## SINGLE/MULTI-POINT ENTRY

When you press the unlock button, your vehicle will unlock in 1 of 2 ways:

1. Single Point Entry: Unlocks the driver's door and fuel filler only. A second press is required to unlock the remaining doors and the tailgate.
2. Multi-Point Entry: Unlocks all doors, fuel filler flap and the tailgate on the first press.

To change from Single to Multi-Point entry (or vice versa), press both the lock and unlock buttons simultaneously for 3 seconds. The hazard warning lamps will flash twice to confirm the change.

This feature may also be set via the **Vehicle Set-Up** menu. See **46, INSTRUMENT PANEL MENU**.

**Note:** If, when the vehicle is unlocked, an audible warning is emitted, this will be a 'Mislock' error. There may be a fault with either of the alarm sensors. Consult with your Land Rover Dealer/Authorised Repairer as soon as possible.

# Entering the vehicle

## GLOBAL OPENING

Press and hold the unlock button for 3 seconds to unlock the vehicle and open all windows.

To cancel global opening, press any of the buttons on the Smart key or operate the driver's window switches. To stop a particular window opening, operate the relevant window switch.

This feature can be enabled/disabled via the **Vehicle Set-Up** menu (see **46, INSTRUMENT PANEL MENU**).

## KEYLESS ENTRY

Keyless entry allows the vehicle to be opened if a Smart key is within 1.0m (3ft) of the door handle or the tailgate external switch.

**Note:** *The Smart key may not be detected if it is placed within a metal container or if it is shielded by a device with a back-lit LCD screen, such as a smart phone, laptop (including laptop bag), games console etc. Keep the Smart key clear of such devices when attempting Keyless entry or Keyless starting.*

**Note:** *The Smart key needs only to be on the driver's person or in a non-metallic bag or briefcase. It does not need to be exposed or handled.*

To enter the vehicle, just pull the door handle. The alarm will be disarmed and the doors unlocked according to the current unlock/entry setting (Single or Multi-Point). The hazard warning lamps will flash twice as 'unlock' confirmation. Power folded mirrors will fold out (if enabled).

**Note:** *If Single Point Entry is the current security setting and a door other than the driver's door is opened first, all doors will unlock.*

## CONVENIENCE MODE

When the door is opened using either the Smart key or keyless entry, the vehicle's electrical system initiates the convenience mode. The following systems become functional:

- Driver position memory.
- Seat and steering column adjustment.
- Interior and exterior lighting.
- Message centre.
- Auxiliary power socket.

## STEERING COLUMN LOCK

The electric steering column lock will lock/unlock when the vehicle is locked/unlocked.

If any malfunction of the steering column lock occurs, a message will be displayed in the Message centre. If this occurs:

1. From the driver's seat, lock and then unlock the vehicle using the Smart key.
2. Try again to unlock the steering column lock, by turning the steering wheel gently to the left and right while locking and then unlocking the vehicle using the Smart key.
3. If the problem persists, seek qualified assistance.

## DRIVE-AWAY LOCKING

Drive-away locking automatically locks all the doors when the vehicle is in motion. This feature can be enabled/disabled via the **Vehicle Set-Up** menu. See **46, INSTRUMENT PANEL MENU**).

**Note:** *Pressing the unlock or lock button on the driver or front passenger door after Drive-away locking has taken place, will override drive-away locking for the current journey. See **15, DOOR LOCKS AND RELEASE LEVERS**.*

## OPENING AND CLOSING THE TAILGATE



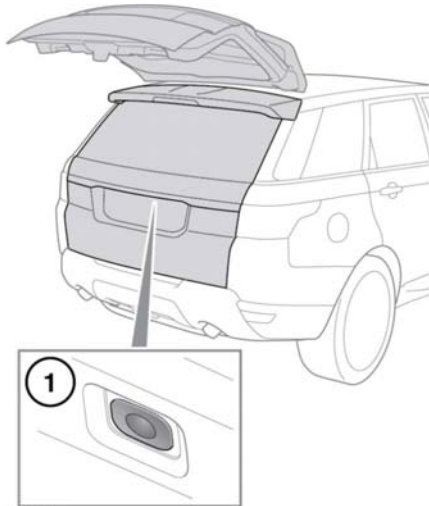
While the tailgate is open, the locking latch is exposed. Do not attempt to manually close the latch as it may also automatically 'soft close' and trap items or body parts.



Make sure there is minimum space of 1.5 metres (58 inches) above and at the rear of vehicle before operating the tailgate. Insufficient space may result in damage to the vehicle.



Do not operate the tailgate if a cycle rack is fitted to the tailgate. Remove any cycles and/or racks before operating the tailgate.



E149756

1. Tailgate release. Lift the tailgate to open.

**Note:** The tailgate external release switch will operate if all doors are unlocked and the gear selector is in the Park (P) position. If the gear selector is in the Neutral (N) position, the switch will only operate if all doors are unlocked, and the ignition is in convenience mode or switched off. The switch will not operate if the gear selector is in any other position.

The tailgate can also be released using the following methods.

- The interior tailgate release switch. See **298, DRIVER CONTROLS**.
- The Smart key tailgate release switch. See **5, UNLOCKING THE VEHICLE**.

**Note:** The tailgate will not open if the vehicle is travelling at or above approximately 5 km/h (3 mph).

## OPENING AND CLOSING THE POWERED TAILGATE

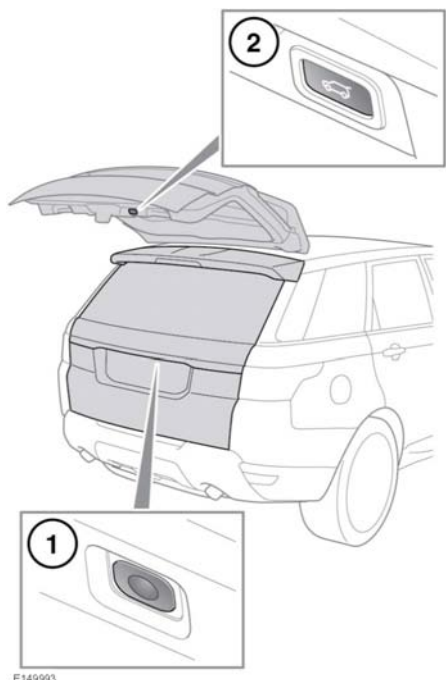


While the tailgate is open, the locking latch is exposed. Do not attempt to manually close the latch as it may also automatically 'soft close' and trap items or body parts.



Do not operate the tailgate if a cycle rack is fitted to the tailgate. Remove any cycles and/or racks before operating the tailgate.

## Entering the vehicle



1. Tailgate open/close using the exterior button. Press to open, stop, reverse direction or close the tailgate.

**Note:** The tailgate external release switch will operate if all doors are unlocked and the gear selector is in the Park (P) position. If the gear selector is in the Neutral (N) position the switch will only operate if all doors are unlocked, and the ignition is in convenience mode or switched off. The switch will not operate if the gear selector is in any other position.

2. Tailgate close. Press to close/stop the tailgate.

The tailgate can also be opened or closed using the following methods.

- The interior tailgate release switch. See **298, DRIVER CONTROLS**.

- The Smart key tailgate release switch. See **5, UNLOCKING THE VEHICLE**.

After the tailgate has opened to its set height, it can be manually raised or lowered. If the tailgate fails to open or close correctly, close it manually then press the tailgate release switch again.

As the closing tailgate approaches the closed position, it will 'soft close' to the fully-closed position. If the vehicle was previously locked, the alarm will re-arm. The hazard warning lamps will flash to confirm the alarm status. An audible confirmation may also be given.

**Note:** If a tailgate switch is pressed while the tailgate is opening or closing, all movement will stop. However, if a switch is pressed during the 'soft close' stage, the open request will be ignored.

**Note:** The tailgate has a minimum closing height, below which it will not power close. Open the tailgate manually, or using a release switch, to the fully open position and then press the tailgate complete close button.



**Before operating the tailgate, make sure that anyone in the vicinity does not have any part of their body in a position where it could be trapped. Note that the 'soft close' action does not incorporate object detection. Death or serious injury could occur, even with an object detection system.**

Object detection while opening: If an object is detected that would interfere with the tailgate opening, tailgate movement will stop. Remove any obstructions and press the tailgate switch again to open.

Object detection while closing: If an object is detected that would interfere with a tailgate closing, tailgate movement will stop and then reverse to the fully open position if able to do so. An audible warning will be given to indicate a mislock. Remove any obstructions and if the tailgate is open, press the tailgate switch again to close the tailgate. If the tailgate is not open, press a tailgate release switch to open the tailgate, remove any obstructions. Once the obstructions have been removed, press the tailgate close switch to close the tailgate.



While the tailgate is open, the locking platform and latch are exposed. Do not manually close the latch as it may also automatically 'soft close' and trap items or body parts.

## TAILGATE OPENING HEIGHT

It is possible to set the maximum height to which a powered tailgate will open. This is useful in parking areas with very low roofs or just for ease of use.

1. Open the tailgate to the position which you want to set as the maximum height. Press the tailgate open button to stop movement or position manually once all movement has stopped.
2. Make sure that the tailgate is stationary for at least 3 seconds.
3. To set the opening height: Press and hold the tailgate close button, on the tailgate, until you hear a chime.
4. Close the tailgate, then open again to check that it opens to the programmed height.

**Note:** If, after performing part 3 of the process the tailgate closes automatically, the required height has not been set. Repeat the process making sure all steps are adhered to.

To reset the maximum opening height to full, repeat the process, but manually move it to the fully open position before pressing and holding the button.

The powered tailgate may lose its position memory if there are multiple object detections or if the battery voltage is low. Powered operation may be inhibited.

To reset the tailgate:

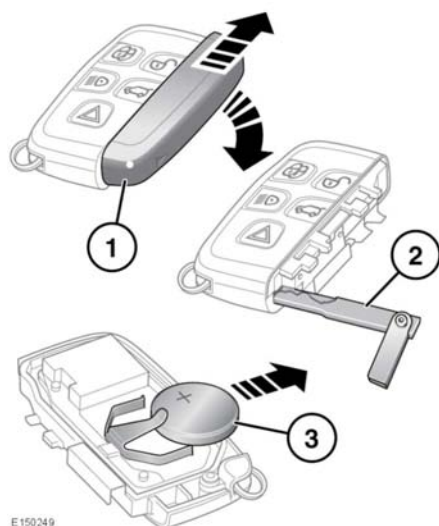
1. Manually close the tailgate.
2. Press a tailgate release switch.
3. Allow the tailgate to power fully open or to the previously set position.
4. Press and release the close switch.
5. Allow the tailgate to power close fully.

The tailgate programmed position memory will now be restored.

## REMOTE KEY FOB BATTERY REPLACEMENT

When the battery needs replacing, there will be a significant decrease in the effective range and **SMART KEY BATTERY LOW** will be displayed in the Message centre.

## Entering the vehicle



E150249



**Battery disposal:** Batteries contain harmful substances and must be disposed of correctly. Seek advice on disposal from a Land Rover Dealer/Authorised Repairer and/or your local authority.

To replace the battery:

1. Remove the cover by sliding in the directions of the arrows.
2. Use the emergency key blade to separate the Smart key body.
3. Fit a new and unused CR2032 type battery (available from a Land Rover Dealer/Authorised Repairer) with the positive (+) side upwards.

**Note:** Avoid touching the new battery. Moisture/oil from fingers can reduce battery life and corrode the contacts.

**Note:** If the low battery warning does not extinguish this indicates that the replacement battery is not in a new and unused condition.

Refit the parts in reverse order, making sure they click securely into place.