

## STARTING THE ENGINE



**Never start the engine, or leave it running, when the vehicle is in an enclosed space. Exhaust gasses are poisonous and can cause unconsciousness and death if inhaled.**



If the engine fails to start, do not continue cranking as this will discharge the battery. It may also damage the catalytic converter due to unburnt fuel passing through the exhaust.

**Note:** The Smart key may not be detected if it is placed within a metal container or if it is shielded by a device with a back-lit LCD screen, such as a smart phone, laptop (including laptop bag), games console etc. Keep the Smart key clear of such devices when attempting Keyless entry or Keyless starting.

To start the engine.

1. Make sure a valid Smart key is inside the vehicle.
2. Make sure Park (P) or Neutral (N) is selected.
3. Firmly depress the brake pedal.
4. Press and release the engine **START/STOP** button.

**Note:** For diesel engined vehicles the delay period before cranking begins will be longer in low ambient temperatures due to extended glow plug operation. During this extended delay the brake pedal must remain depressed.

Once the engine has started, the brake pedal can be released if it safe to do so.

## SWITCHING OFF THE ENGINE

**While the vehicle is stationary:**

1. Make sure that the vehicle is parked with Park (P) selected and the parking brake applied.
2. Press and release the engine **START/STOP** button.

**While the vehicle is moving:**



It is not advisable to switch off the engine while the vehicle is moving. However, if a situation arises where engine switch off is urgent, the following procedure applies:

1. Press and hold the engine **START/STOP** button for 2 seconds, or
2. Press and release the engine **START/STOP** button twice within 3 seconds. With either method, **Engine Stop Button Pressed** is displayed in the Message centre.

## SWITCHING ON THE IGNITION

To switch on the ignition without starting the engine.

1. Make sure the brake pedal is not depressed and that a valid Smart key is inside the vehicle.
2. Press and hold the engine **START/STOP** button until the warning lamps illuminate.
3. Release the engine **START/STOP** button.



If the brake pedal is applied when the engine **START/STOP** button is pressed, the engine will start.

## ROLLING RE-START

A rolling restart can be initiated by selecting Neutral (N) and pressing the engine **START/STOP** button.

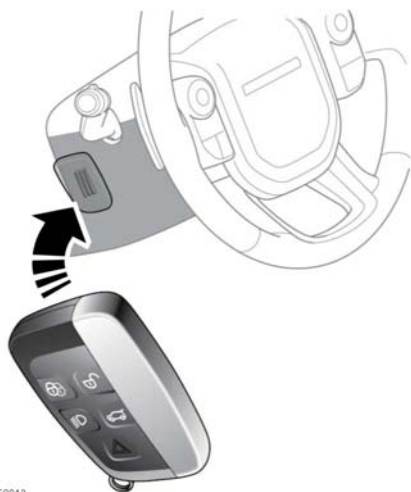
# Starting the engine

## KEYLESS START BACKUP

If the vehicle has been unlocked using the emergency key blade or the Smart key is not detected by the vehicle, it will be necessary to use the keyless start backup to disarm the alarm and start the engine.

The keyless start backup can only be used when the message **Smart Key Not Found - Position As Shown And Press Start Button** is displayed in the message centre.

### Electrically adjusted steering column



E150043

1. Position the Smart key flat against the side of the steering column with the buttons facing outwards.

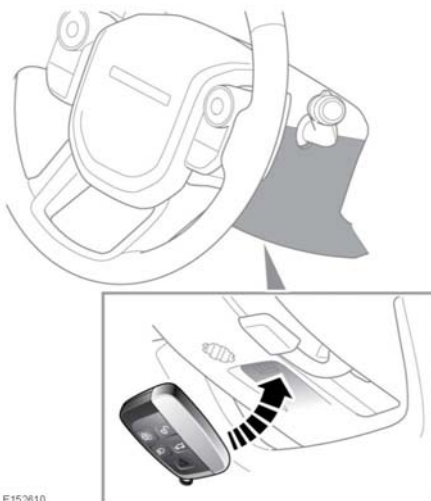
**Note:** The steering column has markings on the side to aid placement of the Smart key.

2. Firmly depress the brake pedal.
3. Press and release the engine **START/STOP** button.

Once the engine has started, the brake pedal can be released if it is safe to do so.

If the Smart key is not recognised, or the engine still fails to start, consult a Dealer/Authorised Repairer.

### Manually adjusted steering column



E152010

1. Position the Smart key against the underside of the steering column with the buttons facing downwards.

**Note:** The steering column has markings on the underside to aid placement of the Smart key.

2. Firmly depress the brake pedal.
3. Press and release the engine **START/STOP** button.

Once the engine has started, the brake pedal can be released if it is safe to do so.

If the Smart key is not recognised, or the engine still fails to start, consult a Dealer/Authorised Repairer.

## IF THE ENGINE FAILS TO START

**Note:** If the engine fails to crank when the engine **START/STOP** button is pressed and there has been a recent collision, the fuel system inertia switch may have been tripped. Seek qualified assistance.

Make sure that the brake pedal is not depressed. Switch on the ignition (see **97, SWITCHING ON THE IGNITION**) and check the instrument panel for warning lights and the message centre for warning messages. See **45, INSTRUMENT PANEL**. Seek qualified assistance if necessary.

Switch off the ignition.

To reset the alarm system use a valid Smart key to lock and unlock the vehicle. See **5, UNLOCKING THE VEHICLE**.

**Note:** The following information applies to petrol engine vehicles only.

If the engine persistently fails to start.

1. Make sure that a valid Smart key is inside the vehicle.
2. Press and hold the engine **START/STOP** button until the warning lamps illuminate.
3. Firmly depress the brake pedal.
4. Make sure Park (**P**) or Neutral (**N**) is selected.
5. Slowly depress the accelerator pedal fully and hold it in the fully depressed position.
6. Press and release the engine **START/STOP** button. The engine will begin to crank.
7. Release the accelerator pedal when the engine starts.

Once the engine has started, the brake pedal can be released if it safe to do so.

If the engine still fails to crank or start, consult a Land Rover Dealer/Authorised Repairer.