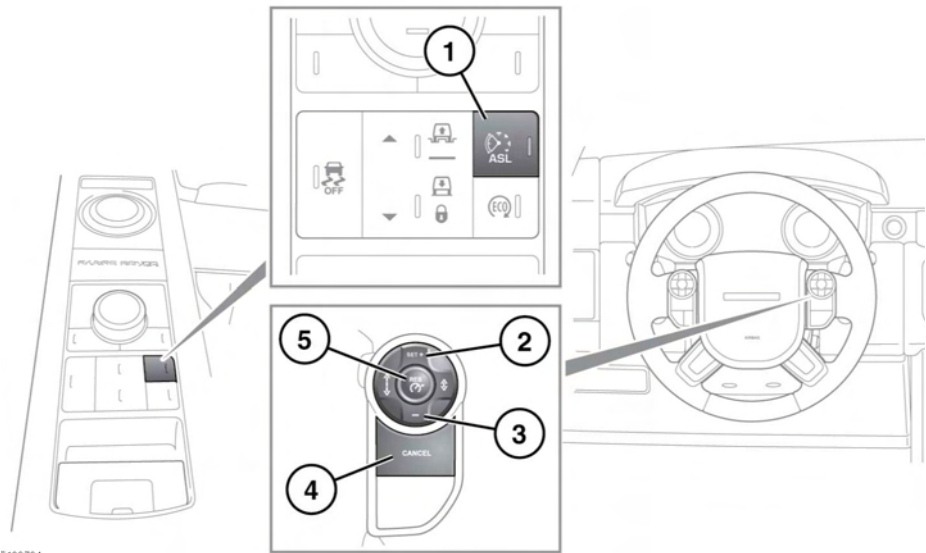


## ASL CONTROLS



ASL allows a speed limit to be set that the driver does not wish to exceed.

### **⚠ WARNING**

**In certain conditions, such as a steep downhill gradient, the vehicle speed may exceed the set speed limit. This is because engine braking is unable to maintain or reduce the vehicle speed, driver intervention may be required.**

1. ASL on/off. The ASL button switches between cruise control and ASL. The systems cannot be used simultaneously. The ASL warning lamp will illuminate when ASL is active. See **69, AUTOMATIC SPEED LIMITER (AMBER)**.

**Note:** ASL only operates at speeds between 18 mph (30 km/h) and 150 mph (240 km/h). However, the speed limit can be set while the vehicle is stationary.

2. Set/increase speed limit. The set speed limit will be displayed in the Message center.

When a speed has been set, the engine will respond normally up to the set speed. Further accelerator pressure will not increase the speed beyond the set speed unless sudden, rapid acceleration (kickdown) is applied. If kickdown is initiated, ASL will be suspended.

3. Decrease speed limit. The set speed limit will be displayed in the Message center.
4. Suspend ASL assistance. ASL can also be suspended by applying sudden, rapid acceleration (kickdown).
5. Resume ASL assistance. ASL will only resume if the vehicle speed is less than the set speed and greater than 18 mph (30 km/h). If these criteria are not met, a message will be displayed in the Message center.