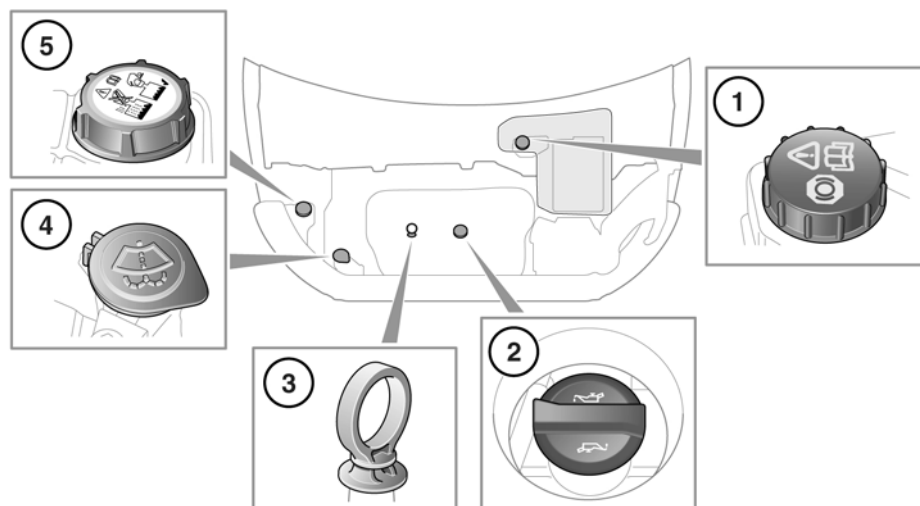


## ENGINE COMPARTMENT OVERVIEW



SL1948

1. Brake fluid reservoir cap (beneath cover):
2. Engine oil filler cap.
3. Engine oil level dipstick.
4. Washer fluid filler cap.
5. Engine coolant filler cap.

### **⚠ WARNING**

While working in the engine compartment, always observe the safety precautions. See 166, SAFETY IN THE GARAGE

### **⚠ WARNING**

Do not drive if there is a possibility that leaked fluid will come into contact with a hot surface, such as the exhaust.

## ENGINE OIL LEVEL CHECK

### **NOTICE**

Check the engine oil weekly. If any significant or sudden drop in oil level is noted, seek qualified assistance.

### **NOTICE**

Never allow the oil level to fall below the lower mark or notch on the dipstick.

### **NOTICE**

If the message **ENGINE OIL PRESSURE LOW** is displayed, stop the engine as soon as it is safe to do so and seek qualified assistance. Do not start the engine until the cause has been rectified.