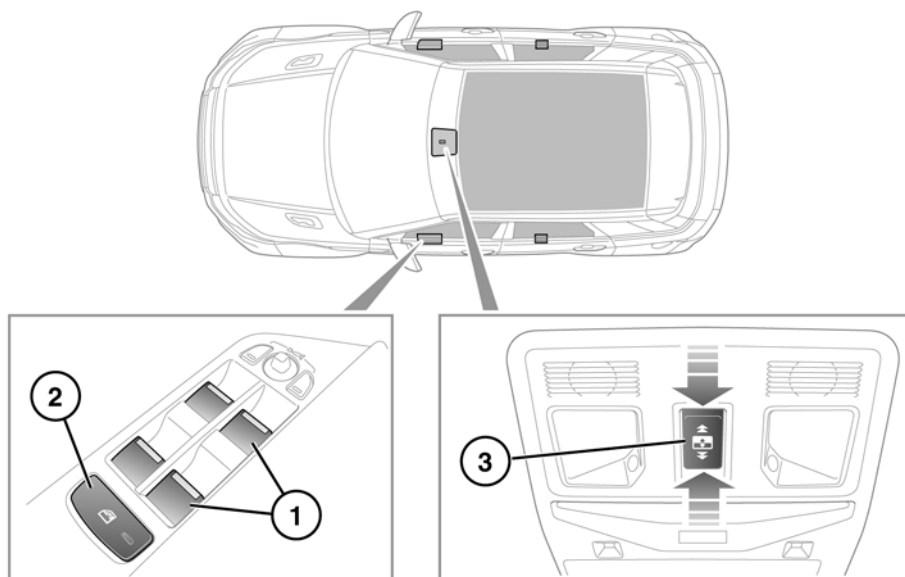


ELECTRIC WINDOWS AND PANORAMIC ROOF BLIND



SL1854

⚠ WARNING

Ensure that you remove the Smart Key when leaving the vehicle. This will prevent unsupervised operation of the windows, which may result in an injury.

1. Briefly pull a switch fully up and release, the window will continue to rise until fully closed. Briefly press a switch fully down and release, the window will continue to lower until fully open. Pressing or pulling a switch again will stop the window.

The windows will operate for 5 minutes after the engine is switched off, as long as none of the doors are opened.

Rear windows have a short drop feature for passenger comfort. The first press of a switch will lower the window a short distance to give a flow of air. A second

press will lower the window to its full extent.

Note: Coupe models have fixed rear windows and a different switch pack.

2. Rear window isolator switch.

The rear windows are isolated when the indicator light in the switch is illuminated.

⚠ WARNING

If children are carried in the rear seats, the isolator switch should be used to prevent operation of the windows. If the windows are operated by young children there is a risk of serious injury or death.

3. Roof blind open/close switch:

To open the blind: Push from the rear of the switch and release. The blind will slide fully open.