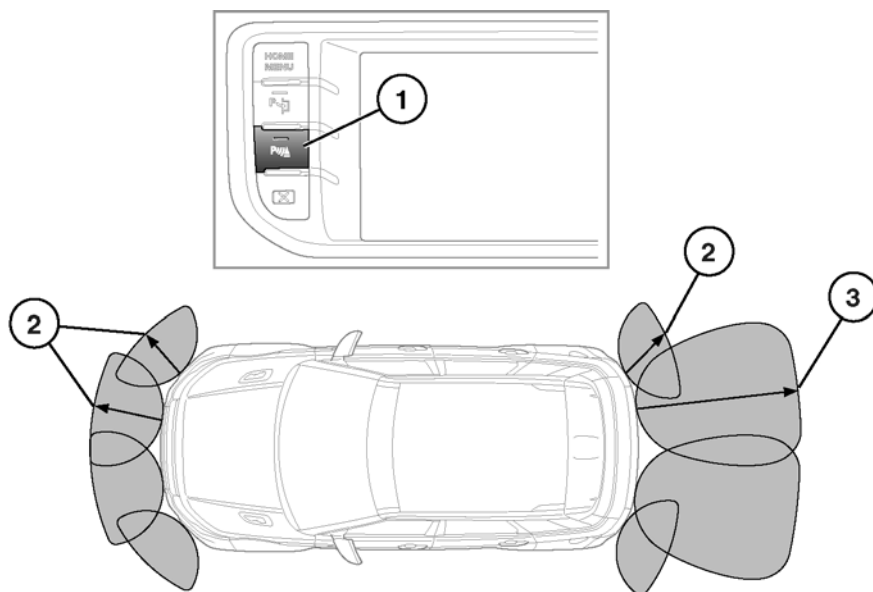


## PARKING AIDS OPERATION



SL1699

### **WARNING**

Parking aids may not detect moving objects, such as children and animals, until they are dangerously close. Always use extreme caution when maneuvering and always use your mirrors.

### **NOTICE**

Park Distance Control (PDC) sensors may not detect some obstructions (e.g. narrow posts, small objects close to the ground and some objects with non-reflective surfaces). Parking aids are for guidance only and are not intended to replace the driver's visual checks for obstructions or objects when maneuvering

1. Parking aids on/off switch. The switch indicator will illuminate.

When reverse gear is selected, the front and rear parking sensors are activated automatically.

To turn off, press the button. The indicator will extinguish.

2. Approximate sensor range -24 in (600 mm).
3. Approximate sensor range -60 in (1500 mm).

### **NOTICE**

Systems using the same frequency band as the front parking sensors, may cause irregular tones to be emitted.

Front sensors will remain active as long as the vehicle's speed does not exceed 10 mph (16 km/h).