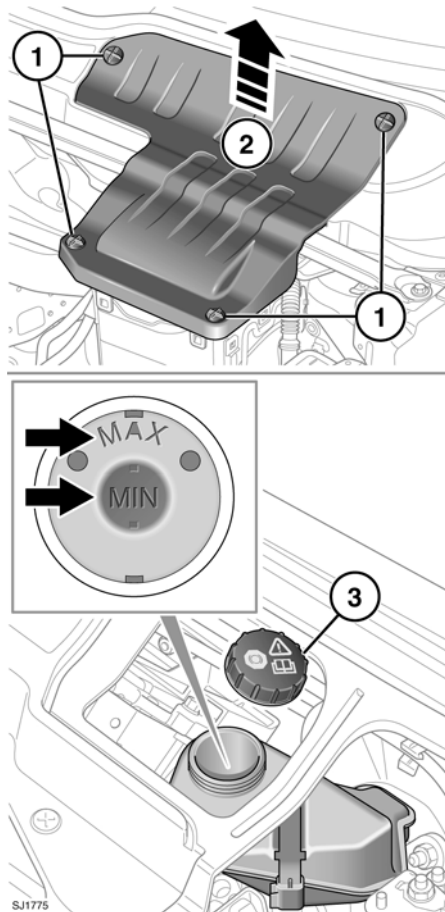


## Fluid level checks



1. Remove the battery cover. Turn the four fasteners 90 degrees counter-clockwise to release.
2. Lift the cover clear.
3. Clean the filler cap before removing to prevent dirt from entering the reservoir. Remove the cap.

The brake fluid level should be between the **MIN** and the **MAX** marks.

**Note:** The fluid level may drop slightly during normal use as a result of brake pad wear, but should not be allowed to drop below the **MIN** mark.

### BRAKE FLUID TOPPING UP

#### **NOTICE**

Brake fluid will damage painted surfaces. Soak up any spillage with an absorbent cloth immediately and wash the area with a mixture of car shampoo and water.

#### **NOTICE**

Only use new fluid from an airtight container. Fluid from opened containers or fluid previously bled from the system will have absorbed moisture, which will adversely affect performance, and must not be used.

#### **NOTICE**

**Top up the brake fluid with Shell DOT4 ESL brake fluid.** If unavailable, use a low viscosity synthetic compatible DOT4 brake fluid that meets ISO 4925 class 6 specification. Only fluid of this type and standard may be used.

#### **NOTICE**

Do not top up the brake fluid to the maximum mark unless the brake pads have been replaced. If unsure, seek qualified assistance.

1. Top up the reservoir to at least the minimum mark.
2. Replace the reservoir cap.
3. Refit the reservoir cover.