

## BRAKE

USA only. This amber brake warning lamp illuminates briefly when the ignition is turned on.



Canada only. This amber brake warning lamp illuminates briefly when the ignition is turned on.

A fault with the EBA system is indicated by the amber brake warning lamp illuminating and an associated warning message. Gently and safely stop the vehicle and seek qualified assistance.

## ELECTRONIC BRAKE-FORCE DISTRIBUTION (EBD)

EBD controls the balance of braking forces supplied to the front and rear wheels, in order to maintain maximum braking efficiency.

If the vehicle has a light load (only the driver in the vehicle for example), EBD will reduce the braking force applied to the rear wheels. If the vehicle is heavily laden, EBD will allow greater braking force to the rear wheels.

## BRAKE

USA only. A fault with the EBD system is indicated by the red brake warning lamp illuminating and an associated warning message.



Canada only. A fault with the EBD system is indicated by the red brake warning lamp illuminating and an associated warning message. See **69**, **WARNING LAMPS**.

## ELECTRIC PARKING BRAKE (EPB)

### ⚠ WARNING

**Do not rely on the parking brake to hold the vehicle stationary if the brake warning lamp is illuminated or the EPB warning lamp is flashing. Seek qualified assistance urgently.**

## NOTICE

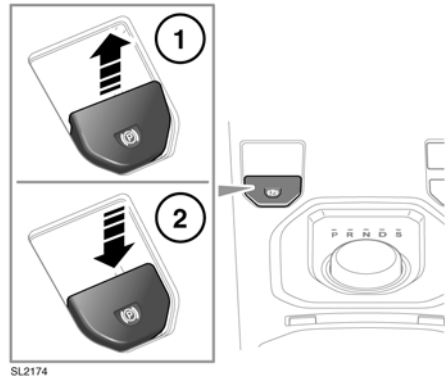
*The parking brake operates on the rear wheels. Therefore, secure parking of the vehicle is dependent on being on a hard and stable surface.*

## NOTICE

*Do not rely on the parking brake to operate effectively, if the rear wheels have been immersed in mud or water.*

**Note:** *If the vehicle is used in severe off-road conditions (e.g. wading, deep mud, etc.), additional maintenance and adjustment of the parking brake will be required. Consult your Land Rover Retailer.*

## EPB MANUAL USE



1. To apply the parking brake while the ignition is on or off, with the vehicle stationary, pull up the lever and release it.

## PARK

USA only. This red parking brake warning lamp will illuminate continuously while the ignition is on and for ten seconds after the ignition is turned off.