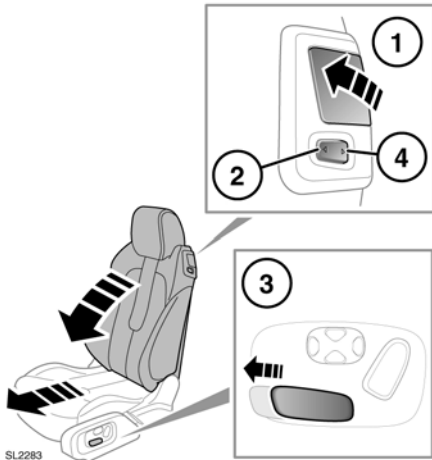


REAR SEAT ACCESS

The front seats tilt and power slide forwards for entry to and exit from the rear seats.

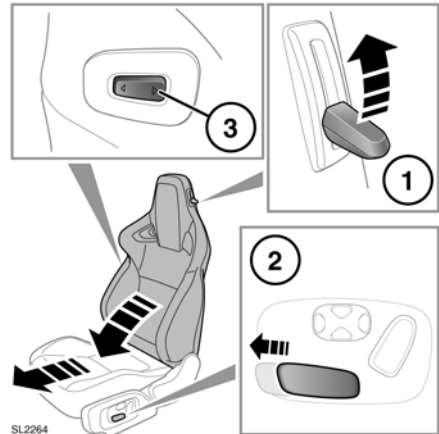
Standard seats



1. Lift the locking lever (1) and pivot the seatback forwards.
2. Push the switch (2) forwards or use the side mounted switch (3) to power slide the seat forwards.
3. To return the seat, pivot the seatback until it locks into its previous position. Push the switch (4) rearwards until the seat stops at its previous position.

Note: Previous position can be a memory position or an adjusted position. If the seat is required to move further back and there is still adjustment available, press and hold the switch (3 or 4) again.

Sports seats



1. Lift the locking lever (1) and pivot the seatback forwards.
2. Push the side mounted switch (2) to power slide the seat forwards.
3. To return the seat, pivot the seatback until it locks into its previous position. Push the switch (3) rearwards until the seat stops at its previous position.

Note: Previous position can be a memory position or an adjusted position. If the seat is required to move further back and there is still adjustment available, press and hold the switch (2 or 3) again.

NOTICE

Take care not to damage the seat backs while gaining access to the rear seats.