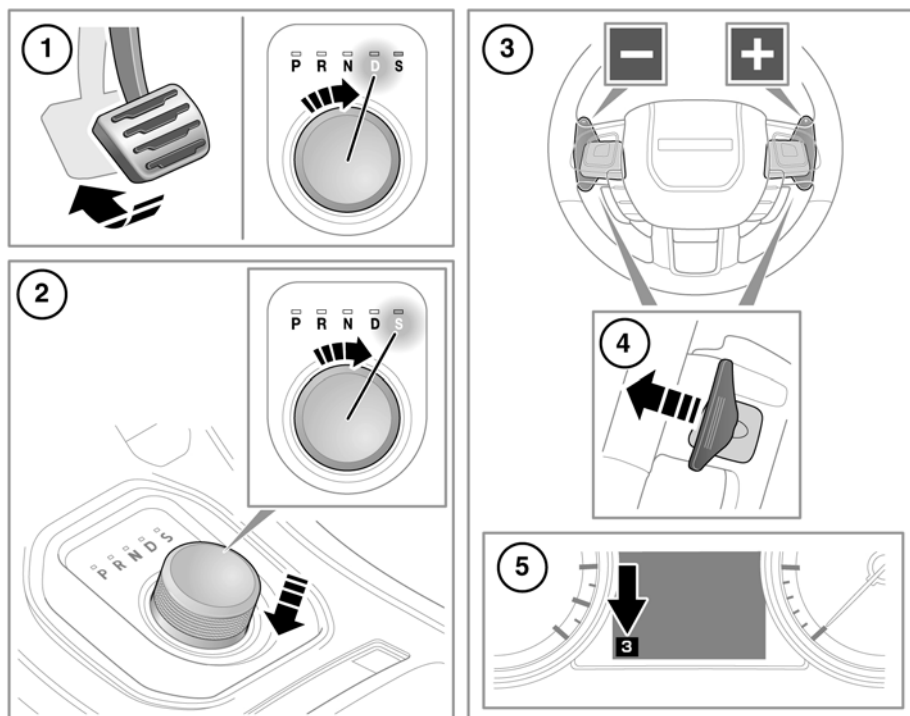


## AUTOMATIC TRANSMISSION

The rotary drive selector rotates in either direction. At engine start up, the selector elevates out of its parked position.



SL2153

1. To select **D** (Drive) or **R** (Reverse) gear, apply the foot brake then rotate the drive selector. The related LED by the selector will illuminate.  
**Note:** If pressure is applied to the selector before the foot brake is applied, the selected gear may not be available. In this situation, remove pressure from the selector, ensure that the foot brake is applied and select the required gear as described.
2. To select **S** (Sport) mode from **D**, press the drive selector down and rotate to **S**. The related LED by the selector will illuminate.
3. CommandShift™ gear selector paddles (left paddle for downshifts, right paddle for upshifts).
4. Pull a paddle briefly to change gear. To exit CommandShift™ mode and return to Sport mode, pull and hold the upshift (+)