

## 5. Approach illumination:

- When approaching the vehicle during darkness, press to switch on the approach illumination. Press again to turn the approach lamps off. The approach illumination period set at the factory is 30 seconds. This delay period may be configured to provide illumination lasting between 0 and 240 seconds. See **43, INSTRUMENT PANEL MENU**.

**Note:** In some markets a second press of the button will turn on the headlamps and reversing lamps. A third press will be required to turn the lamps off.

6. Emergency key access: slide open the side cover.
7. Remove the emergency key blade and unfold.
8. Fully insert the emergency key blade to remove cover.
9. Fully insert the emergency key blade into the lock and rotate to unlock the door.
10. Fully insert the emergency key blade into the lock cover.
11. Locate the rear of the lock cover using the tabs and close the cover.
12. Remove the emergency key blade from the cover.

**Note:** When the door is opened the alarm will begin to sound. To silence the alarm, dock the remote control.

## STEERING COLUMN LOCK

The electric steering column lock will lock/unlock when the vehicle is locked/unlocked.

If any malfunction of the steering column lock occurs, a message will be displayed in the message centre. If this occurs:

1. From the driver's seat, lock and then unlock the vehicle using the Smart Key.
2. Try again to unlock the steering column lock, by turning the steering wheel gently to the left and right while locking and then unlocking the vehicle using the Smart Key.
3. If the problem persists, seek qualified assistance.

## DRIVE-AWAY LOCKING

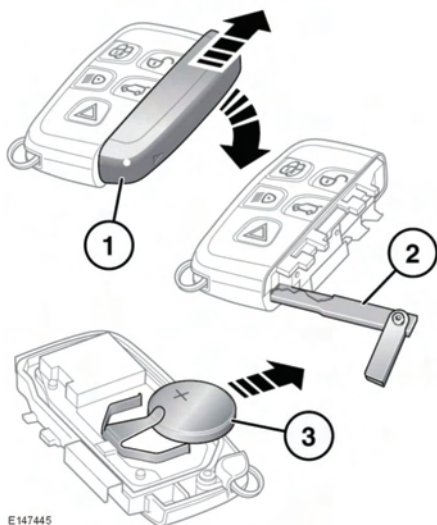
Drive-away locking automatically locks all the doors when the vehicle is in motion. This feature can be enabled/disabled via the **Vehicle Set-Up** menu (see **43, INSTRUMENT PANEL**).

**Note:** Pressing the lock or unlock button on the Smart Key will override drive-away locking for the current journey.

## REMOTE KEY FOB BATTERY REPLACEMENT

When the battery needs replacing, there will be a significant decrease in the effective range and a message will be displayed in the Message centre.

## Entering the vehicle



E147445

To replace the battery:

1. Remove the cover by sliding in the directions of the arrows.
2. Use the emergency key blade to separate the Smart Key body.
3. Fit a new and unused CR2032 type battery (available from a Land Rover Dealer/Authorised Repairer) with the positive (+) side upwards.

**Note:** Avoid touching the new battery. Moisture/oil from fingers can reduce battery life and corrode the contacts.

Refit the parts in reverse order, ensuring that they click securely into place.



Battery disposal: Batteries contain harmful substances and must be disposed of correctly. Seek advice on disposal from a Land Rover Dealer/Authorised Repairer and/or your local authority.