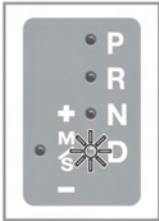
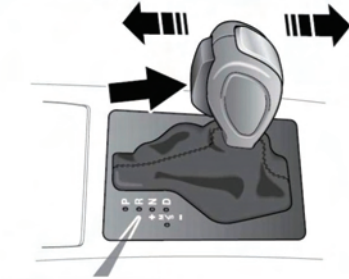
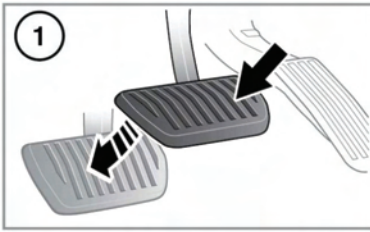


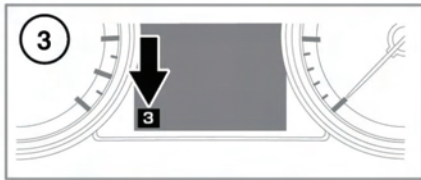
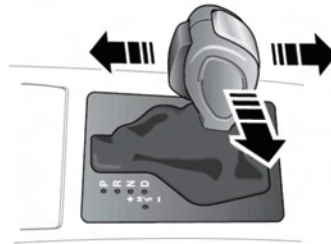
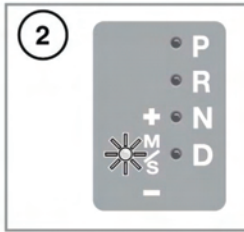
## AUTOMATIC TRANSMISSION



1. To select Drive (**D**) when the vehicle is stationary, apply the foot brake and press the gear selector release button.

**Note:** If pressure is applied to the selector lever before the foot brake is applied, any gear selected may not be available, irrespective of the lever position. In this situation, remove pressure from the selector lever, ensure that the foot brake is applied and select the required gear.

2. To select sport mode, move the gear selector to the left while in **D**. Confirmation will be displayed in the message centre.



To use CommandShift™, first select sport mode, then move the selector lever forward to move up a gear, and back to move down gear.

To return to automatic mode move the selector lever back to the **D** position. The **D** on the selector display will illuminate to confirm that automatic mode has been selected.

3. The selected gear will be displayed in the message centre.



**Park (P) should be engaged and the parking brake applied when the vehicle is stationary.**