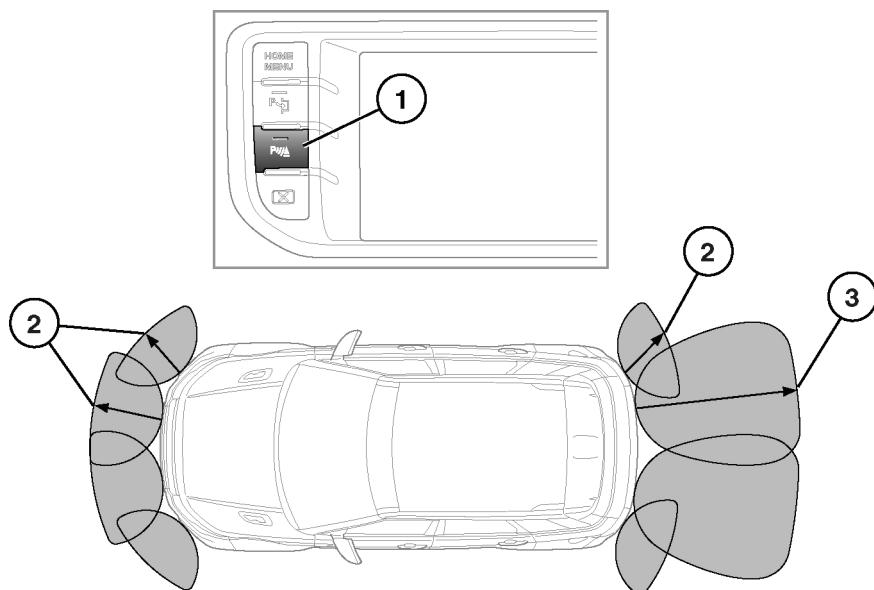


## PARKING AIDS



SL1699

### **⚠ WARNING**

**Parking aids may not detect moving objects, such as children and animals, until they are dangerously close. Always use extreme caution when maneuvering and always use your mirrors.**

### **NOTICE**

*Park Distance Control (PDC) sensors may not detect some obstructions (e.g. narrow posts, small objects close to the ground and some objects with non-reflective surfaces). Parking aids are for guidance only and are not intended to replace the driver's visual checks for obstructions or objects when maneuvering*

1. Parking aid on/off switch. The switch indicator will illuminate.

When reverse gear is selected, the front and rear parking sensors are activated automatically.

To turn off, press the button. The indicator will extinguish.

2. Approximate sensor range -24in (600mm).
3. Approximate sensor range -60in (1500mm).

### **NOTICE**

*Systems using the same frequency band as the front parking sensors, may cause irregular tones to be emitted.*

Front sensors will remain active as long as the vehicle's speed does not exceed 10mph (16km/h).

With automatic transmission, selecting **N** from **R** will keep front and rear sensors active.

When objects are detected, the parking aid emits a warning tone which increases in frequency as the vehicle gets closer to the object and then becomes constant when the obstacle is within 12in (300mm).

**Note:** *The front parking aid provides an audible proximity warning when driving forwards and when reversing.*

## TOWING

The rear sensors are automatically disabled when a trailer with an approved electrical connector is connected.

**Note:** *Trailers fitted with LED lights will not disable the rear parking aids sensors. When reverse gear is selected, the attached trailer will be detected as an obstacle.*

## CLEANING THE SENSORS

### NOTICE

*When washing the vehicle do not aim high pressure water jets directly at the sensors. Do not use abrasive materials or hard/sharp objects to clean the sensors. Only use approved vehicle shampoo.*

The sensors should be kept clean to maintain accuracy and performance.

## SYSTEM FAULT

If a system fault is detected, a long high-pitched tone will sound and the switch indicator will flash. A message will be displayed in the message center. Contact your Retailer as soon as possible.

## REAR VIEW CAMERA

### ⚠ WARNING

**Always turn and look before reversing. It remains the driver's responsibility to detect obstacles and estimate the vehicle's distance from them when reversing.**

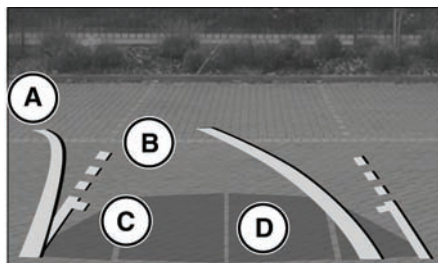
When Reverse (**R**) is selected the camera provides a wide-angle rear view color image on the touch screen.

The camera display has priority over the parking aid display. To view the parking aid display instead or to cancel camera display at any time, touch the display.

To adjust the camera settings, touch and hold anywhere on the touch screen to access the user options screen.

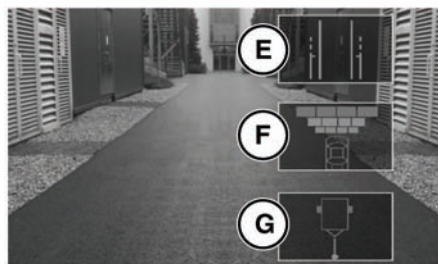
The display also incorporates graphic overlays, indicating vehicle direction, width and proximity to surrounding objects.

## Parking aids



### NOTICE

*Some overhanging objects or barriers which could cause damage to the vehicle, may not be detected by the camera.*



SL1971

- A.** Solid line: The projected path based on current steering wheel position.
- B.** Dotted line: The safe working width of the vehicle (including exterior mirrors).
- C.** Tailgate access guideline: Do not reverse beyond this point if tailgate access is required.
- D.** Parking sensor activation: A colored area appears, to indicate which rear sensor(s) has been activated.
- E.** User option. Touch to enable/disable A, B & C.
- F.** User option. Touch to enable/disable D.
- G.** User option. Touch to enable/disable Hitch Assist guidance lines.