

FOOT BRAKES

WARNING

Do not rest your foot on the brake pedal while the vehicle is in motion.

WARNING

Never allow the vehicle to coast (freewheel) with the engine turned off. The engine must be running to provide full braking assistance. The brakes will still function with the engine off, but far more pressure will be required to operate them.

WARNING

If the red brake warning indicator illuminates, safely bring the vehicle to a stop, as quickly as possible and seek qualified assistance.

WARNING

If the red brake warning lamp illuminates, safely bring the vehicle to a stop, as quickly as possible and seek qualified assistance.

Driving through heavy rain or water can have an adverse effect on braking efficiency. Under such circumstances, it is recommended that you lightly apply the brakes intermittently, to dry the brakes.

WARNING

Do not pump the brake pedal at any time; this will interrupt operation of the system and may increase stopping distances.

ABS WARNING LAMP



The ABS warning lamp illuminates briefly when the ignition is turned on.

If this amber warning lamp illuminates when driving (accompanied by an associated warning message), drive with extra caution, avoid heavy braking where possible, and seek qualified assistance as soon as possible.

WARNING

ABS cannot overcome the physical limitations of stopping the vehicle in too short a distance, cornering at too high a speed or the danger of aquaplaning.

Do not take risks that could affect the safety of yourself, your passengers and any other road users. It is the driver's responsibility to drive within normal safety margins, giving due consideration to prevailing weather and traffic conditions.

STEEP SLOPES

If the vehicle is stationary on a steep, slippery slope, it may begin to slide even with the brakes applied. This is because without wheel rotation, the ABS cannot determine vehicle movement.

To counteract this, briefly release the brakes to allow some wheel rotation. Then re-apply the brakes to allow ABS to gain control.

EMERGENCY BRAKE ASSIST (EBA)

If the driver rapidly applies the brakes, EBA automatically boosts the braking force to its maximum, in order to bring the vehicle to a halt as quickly as possible. If the driver applies the brakes slowly, but conditions mean that ABS operates on the front wheels, EBA will increase the braking force in order to apply ABS control to the rear wheels.

EBA stops operating as soon as the brake pedal is released.

BRAKE

USA only. This amber brake warning lamp illuminates briefly when the ignition is turned on.



Canada only. This amber brake warning lamp illuminates briefly when the ignition is turned on.

A fault with the EBA system is indicated by the amber brake warning lamp illuminating and an associated warning message. Gently and safely stop the vehicle and seek qualified assistance.

ELECTRONIC BRAKE DISTRIBUTION (EBD)

EBD controls the balance of braking forces supplied to the front and rear wheels, in order to maintain maximum braking efficiency.

If the vehicle has a light load (only the driver in the vehicle for example), EBD will reduce the braking force applied to the rear wheels. If the vehicle is heavily laden, EBD will allow greater braking force to the rear wheels.

BRAKE

USA only. A fault with the EBD system is indicated by the red brake warning lamp illuminating and an associated warning message.



Canada only. A fault with the EBD system is indicated by the red brake warning lamp illuminating and an associated warning message. See **67, WARNING LAMPS**.

ELECTRIC PARKING BRAKE (EPB)

⚠ WARNING

Do not rely on the parking brake to hold the vehicle stationary if the brake warning lamp is illuminated or the EPB warning lamp is flashing. Seek qualified assistance urgently.

NOTICE

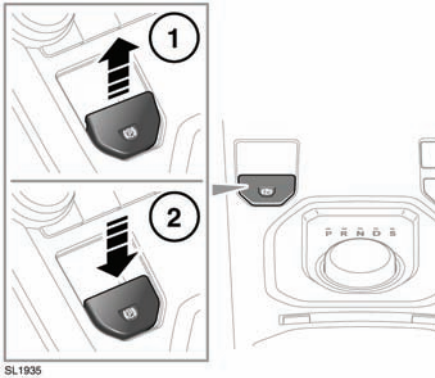
The parking brakes operates on the rear wheels. Therefore, secure parking of the vehicle is dependent on being on a hard and stable surface.

NOTICE

Do not rely on the parking brake to operate effectively, if the rear wheels have been immersed in mud or water.

Note: *If the vehicle is used in severe off-road conditions (e.g. wading, deep mud, etc.), additional maintenance and adjustment of the parking brake will be required. Consult your Land Rover Retailer.*

APPLYING THE EPB MANUALLY



1. To apply the parking brake, with the vehicle stationary, pull up the lever and release it.

PARK

USA only. This red parking brake warning lamp will illuminate.



Canada only. This red parking brake warning lamp will illuminate.

Continuous red illumination indicates the brake has been correctly applied.

If the lever is operated when the vehicle speed is less than 2mph (3km/h) the vehicle will be brought to an abrupt stop. The stop lamps will not be illuminated.

If a fault is detected the warning lamp will flash and a **PARKBRAKE** message will be displayed in the message center.

Note: The red brake warning indicator will continue to be illuminated for at least ten seconds after the ignition has been turned off.

2. To release the parking brake, press the brake pedal and press down on the EPB lever.

NOTICE

Driving the vehicle with the parking brake applied, or repeated use of the parking brake to slow the vehicle, may cause serious damage to the brake system.

In an emergency, with the vehicle travelling more than 2mph (3km/h), pulling on the EPB lever and holding gives a gradual reduction in speed. The brake warning indicator will illuminate accompanied by a warning tone and a **PARKBRAKE** message appearing in the message center. The stop lamps will illuminate.

APPLYING THE EPB AUTOMATICALLY

EPB will be applied automatically if the ignition is switched off and the vehicle speed is below 2mph (3km/h).

To prevent automatic operation, when the vehicle is stationary, press and hold the EPB switch in the release position. Within 5 seconds, switch off the ignition and continue to hold the EPB switch for a further 2 seconds.

RELEASING THE EPB AUTOMATICALLY

If the vehicle is stationary with the EPB applied and the transmission in **D** or **R**, pressing the accelerator will release the EPB and allow the vehicle to move off.

Note: Automatic release of the EPB is possible only when the driver's door is closed or the driver's seat belt is buckled.

To delay automatic release, hold the EPB lever in the applied position and release at the desired point.

The parking brake system gradually reduces the system load to assist a smooth drive away. If the reduction in system load causes the vehicle to move after a valid gear is selected, full load will be automatically re-applied to the parking brake.

To override the load reducing feature of the EPB, manually apply the parking brake after selecting a gear.

In the event of a failure, a **PARKBRAKE** message will be displayed in the message center.

At the start of a trip, EPB release times may be extended when changing from **P** or **N**. This is to allow for increased gear engagement times.

EPB WARNING INDICATORS

If the system detects a fault with the EPB, the amber brake warning indicator will illuminate accompanied by a message on the message center.

If the system detects a fault while EPB is operating, the red brake warning indicator will flash and a **PARKBRAKE FAULT** message will display in the message center.

Note: *The red brake warning indicator will continue to be illuminated for at least ten seconds after the ignition has been turned off.*