

## DISABILITY MODIFICATIONS

Occupants with disabilities which may require modification of the vehicle, must contact a Dealer/Authorised Repairer before any modifications are made.

## AIRBAG SYSTEM



**The components that make up the airbag system are sensitive to electrical or physical interference, either of which could easily damage the system and cause inadvertent operation or a malfunction of the airbag module.**

To prevent malfunction of the airbag system always consult your Dealer/Authorised Repairer before fitting any of the following:

- Electronic equipment such as a mobile phone, two-way radio or in-car entertainment system.
- Accessories attached to the front of the vehicle.
- Any modification to the front of the vehicle.
- Any modification involving the removal or repair of any wiring or component in the vicinity of any of the airbag system components, including the steering wheel, steering column, instrument or fascia panels.
- Any modification to the fascia panels or steering wheel.

## ANTI-THEFT SYSTEM



**No modifications or additions should be made to the anti-theft system. Such changes could cause the system to malfunction.**

## OWNER MAINTENANCE



Any significant or sudden drop in fluid levels, or uneven tyre wear, should be reported to a qualified technician without delay.

In addition to the routine maintenance, a number of simple checks must be carried out more frequently.

## DAILY CHECKS

- Operation of lamps, horn, direction indicators, wipers, washers and warning lamps.
- Operation of seat belts and brakes.
- Look for fluid deposits underneath the vehicle that might indicate a leak.

## WEEKLY CHECKS

- Engine oil level.
- Engine coolant check.
- Brake fluid level.
- Power steering fluid level.
- Screen washer fluid level.
- Tyre pressures and condition.
- Operate air conditioning.

**Note:** *The engine oil level should be checked more frequently if the vehicle is driven for prolonged periods at high speeds.*

## ARDUOUS DRIVING CONDITIONS

When a vehicle is operated in extremely arduous conditions, more frequent attention must be paid to servicing requirements.

Arduous driving conditions include:

- Driving in dusty and/or sandy conditions.
- Driving on rough and/or muddy roads and/or wading.
- Driving in extremely hot/cold conditions.

- Towing a trailer or driving in mountainous conditions.
- Driving in areas using road salt or other corrosive materials on the driving surface.

Contact a Land Rover Dealer/Authorised Repairer for advice.

## DIESEL PARTICULATE FILTER (DPF)

Diesel vehicles equipped with a particle filter have more efficient emission control. The particles in the exhaust gases are collected in the filter during normal driving.

When a DPF message is displayed, the filter requires a regeneration cycle to clean itself. This requires the engine to have reached normal operating temperature. Regeneration takes place automatically at an interval of approximately 300-900 km (190-560 miles) depending on driving conditions. Regeneration normally takes 10-20 minutes and is automatically requested by the engine control module if the vehicle is driven steadily at vehicle speeds between 40 mph to 70 mph. It is possible that the regeneration process will occur at lower vehicle speeds, but the events may take a little longer at a 50 km/h (30 mph) average speed.

## DRIVING SHORT DISTANCES OR IN COLD WEATHER

If the vehicle is frequently driven short distances or in cold weather conditions then the engine may not reach normal operating temperature. This means that regeneration of the diesel particle filter does not take place and the filter is not efficiently cleaned. When the filter reaches a condition when a filter regeneration is appropriate and the current drive style is not appropriate, a warning triangle on the instrument panel illuminates, and the message **DPF Full. See manual** is displayed on the instrument panel. This is not

indicating a fault condition with the vehicle and no dealership support should be required. Start regeneration of the filter by driving the vehicle, preferably on a main road or motorway. The vehicle should then be driven for approximately 20 minutes or more.

When regeneration is complete the warning text is cleared automatically.

**Note:** *A small increase in fuel consumption may be noticed temporarily during regeneration.*

## ROAD TESTING DYNAMOMETERS (ROLLING ROADS)

It is essential that any dynamometer testing is carried out only by a qualified person, familiar with the dynamometer testing and safety procedures practised by Land Rover Dealers/Authorised Repairers.

## SAFETY IN THE GARAGE



**If the vehicle has been driven recently, do not touch the engine, exhaust and cooling system components until the engine has cooled.**



**Never leave the engine running in an unventilated area - exhaust gases are poisonous and extremely dangerous.**



**Do not work beneath the vehicle with the wheel changing jack as the only means of support.**



**Keep your hands and clothing away from drive belts, pulleys and fans. Some fans may continue to operate or start operating after the engine has stopped.**



**Remove metal wrist bands and jewellery, before working in the engine compartment.**



Do not touch electrical leads or components while the engine is running, or with the starter switch turned on.



Do not allow tools or metal parts of the vehicle to make contact with the battery leads or terminals.

## FUEL SYSTEM



Under no circumstances should any part of the fuel system be dismantled or replaced by anyone other than a suitably qualified vehicle technician.



Ensure sparks and naked lights are kept away from the engine compartment.



Wear protective clothing, including, where practicable, gloves made from an impervious material.

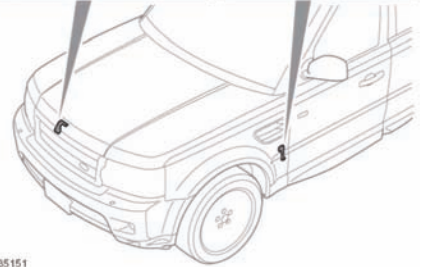
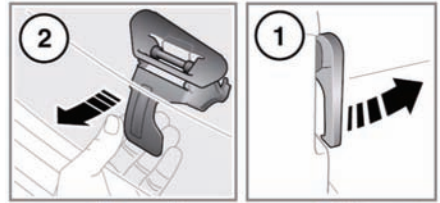
## USED ENGINE OIL

Prolonged contact with engine oil may cause serious skin disorders, including dermatitis and cancer of the skin. Always wash thoroughly after contact.



It is illegal to pollute drains, water courses or soil. Use authorised waste disposal sites to dispose of used oil and toxic chemicals.

## OPENING THE BONNET



E135151

1. Pull the bonnet release lever, located in the left-hand front footwell.
2. Lift the bonnet safety catch lever, located below the centre point of the bonnet, then raise the bonnet.

## CLOSING THE BONNET

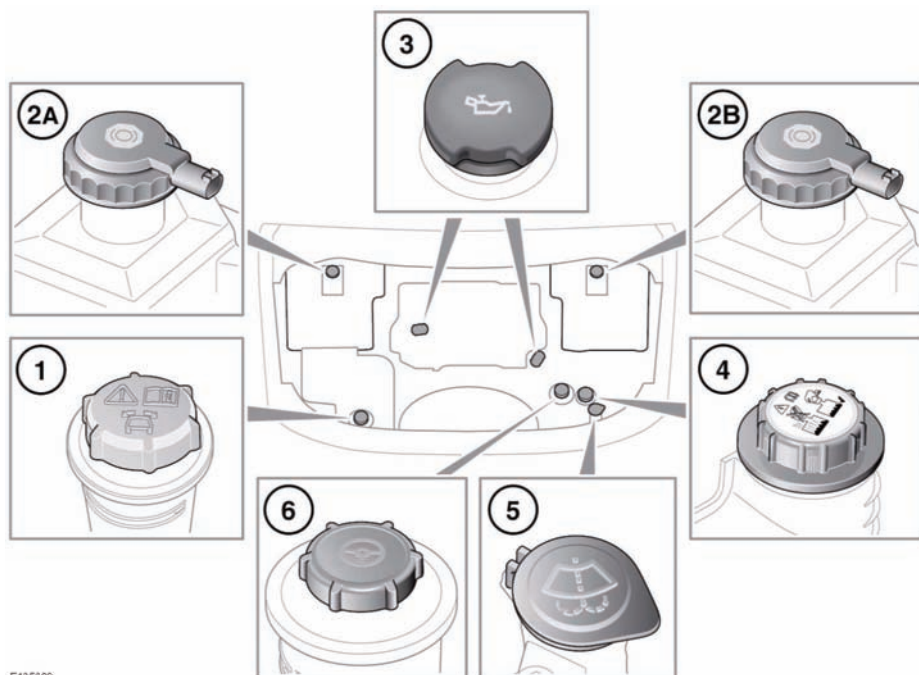


**Do not drive with the bonnet retained by the safety catch alone.**

1. Lower the bonnet until the safety catch engages. Using both hands, press the bonnet down until the catches click.
2. Check that both catches are engaged, by trying to lift the front edge of the bonnet.

## ENGINE COMPARTMENT OVERVIEW

V6 Diesel



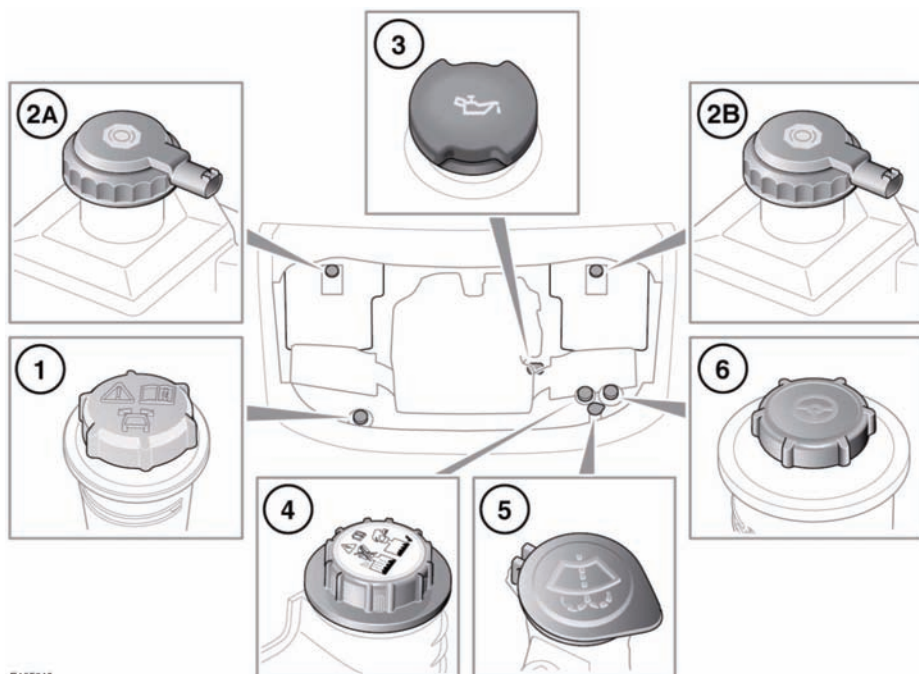
E135609

1. Dynamic response fluid reservoir cap.
2. Brake fluid reservoir cap:
  - A. Right-hand drive vehicles.
  - B. Left-hand drive vehicles.
3. Engine oil filler cap.
4. Engine coolant filler cap.
5. Windscreen washer fluid filler cap.
6. Power steering fluid filler cap.



**Do not drive if there is a possibility that leaked fluid will come into contact with a hot surface, such as the exhaust.**

## V8 Petrol



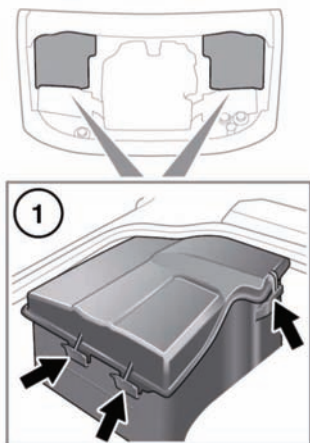
E135610

1. Dynamic response fluid reservoir cap.
2. Brake fluid reservoir cap:
  - A. Right-hand drive vehicles.
  - B. Left-hand drive vehicles.
3. Engine oil filler cap.
4. Engine coolant filler cap.
5. Windscreen washer fluid filler cap.
6. Power steering fluid filler cap.



**Do not drive if there is a possibility that leaked fluid will come into contact with a hot surface, such as the exhaust.**

## UNDER BONNET COVERS - REMOVAL



E134967

1. Press the tabs to release the cover from the casing.

**Note:** Releasing the inboard tab on the front edge of the cover first will make it easier to release the remaining tabs.

2. Lift the front edge of the cover and slide forwards to remove.

## UNDER BONNET COVERS - REFITTING

- ⚠ Before refitting the underbonnet covers, ensure that no pipes, cables or other items, have been trapped between the cover and casing.

1. Slide the rear edge of the cover under the rubber trim fitted to the scuttle panel.
2. Make sure the front edge of the cover is flush to the casing, and then press down until the cover clicks into place.

## UNBLOCKING WASHER JETS



Do not operate the washer jets during unblocking or adjustment.

Windscreen washer fluid may cause irritation to the eyes and skin. Always read and observe the washer fluid manufacturers instructions.

If a washer jet becomes blocked, use a thin strand of wire to unblock the jet by inserting the wire into the jet. Ensure that the wire is completely removed after unblocking. The washer jet position may also be adjusted by inserting the point of a needle into the jet and gently repositioning it.

## CHANGING A BULB



Before attempting a bulb change, ensure that the ignition and the affected lamp are turned off.

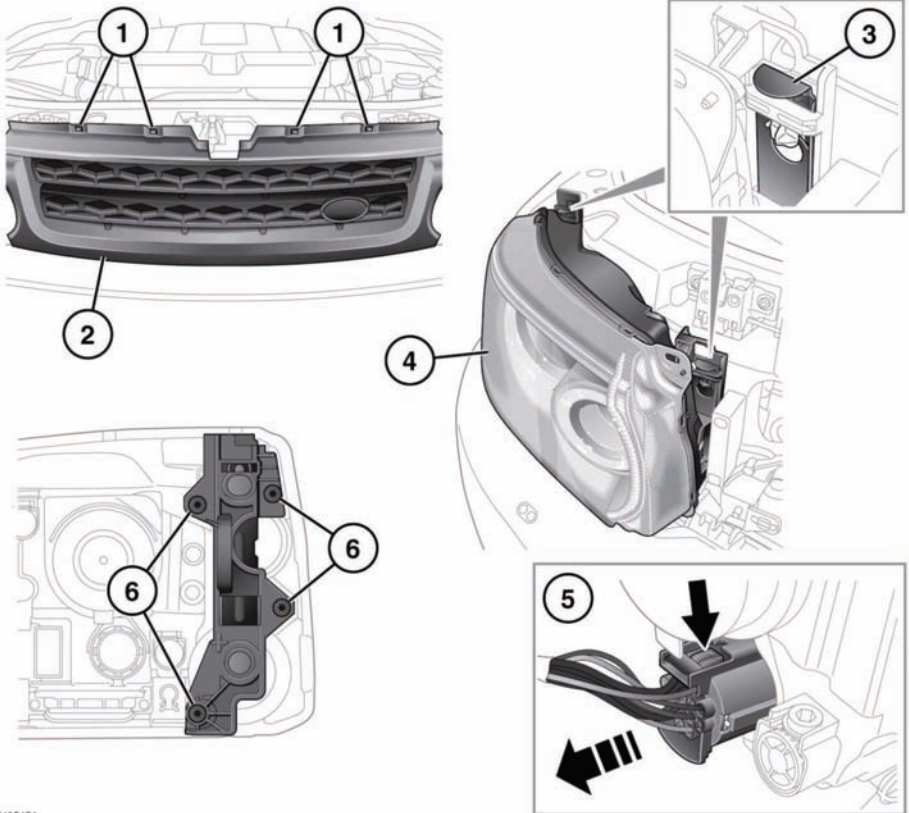


Always replace bulbs with the correct type and specification. If you are in any doubt contact your Land Rover Dealer/Authorised Repairer for advice.

**Note:** In certain territories it is a legal requirement to carry spare bulbs. A replacement bulb kit is available as an approved accessory from your dealer.

**Note:** After replacing a headlamp bulb, headlamp alignment should be checked with the appropriate equipment.

## HEADLAMP REMOVAL



E135154



Do not place the removed lamp unit face down on hard or abrasive surfaces. Doing so may scratch the surface of the lens.

1. Press down on the four upper clips, and gently pulling the grill forwards.
2. Lift the grille clear of the vehicle and place where it will not be damaged.
3. Carefully lever up the locking tabs securing the rear of the headlamp. Hold the headlamp in position while doing so.

4. Holding the front of the lamp, lift forwards and clear of the body.

**Note:** The locking tabs (3) can be levered too far up, preventing the headlamp being released. If this happens ease the tabs down until the headlamp can be moved forward.

5. Disconnect the electrical connector from the back of the unit and remove the unit from the vehicle.




**Note:** Place face down on a flat surface covered in a soft material to prevent damage to the units lenses


6. To access the direction indicator, static bending lamp and side lamp, the headlamp unit locking slide assembly must be completely removed from the unit.


To remove the slide assembly, remove the four screws (arrowed). When refitting the slide, do not overtighten the screws.

**Note:** Refitting the headlamp unit is the reverse of removal.

## XENON LAMPS

 Replacement or maintenance of Xenon lamps should only be carried out by suitably qualified personnel.

 High voltage is required to ignite the gas and metal vapour which are used to power Xenon lamps. Contact with this voltage can cause serious injury.

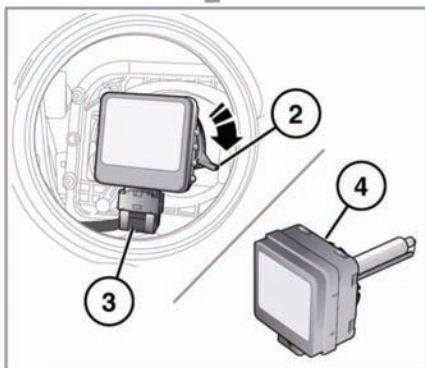
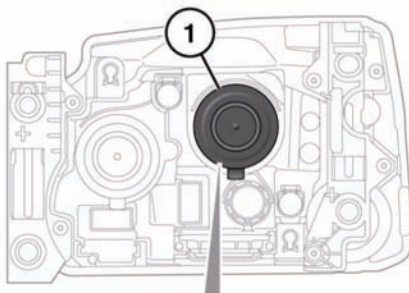
 Xenon lamp units operate at a very high temperature. Ensure that the lamp units have cooled before attempting to touch them.

 Xenon lamp units contain Mercury which is highly toxic, and can be extremely harmful.



Seek advice about the correct disposal of Xenon lamp units from a Land Rover Dealer/Authorised Repairer, or your local authority.

## XENON HEADLAMP BULB REPLACEMENT



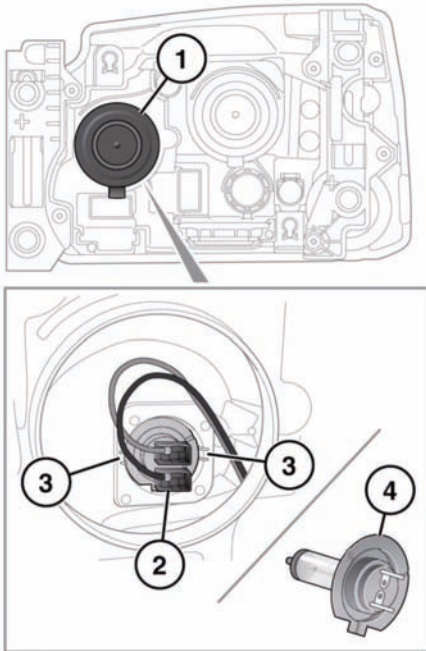
E135155

1. Twist and lift off the domed cap.
2. Rotate the collar securing the bulb to the lamp and release the bulb.
3. Pull off the electrical connector and remove the bulb.
4. Insert the new bulb unit and reverse the above procedure. Ensure that the lugs on the cap are in contact with the bulb base.



## HEADLAMP BULB REPLACEMENT - HALOGEN HIGH BEAM

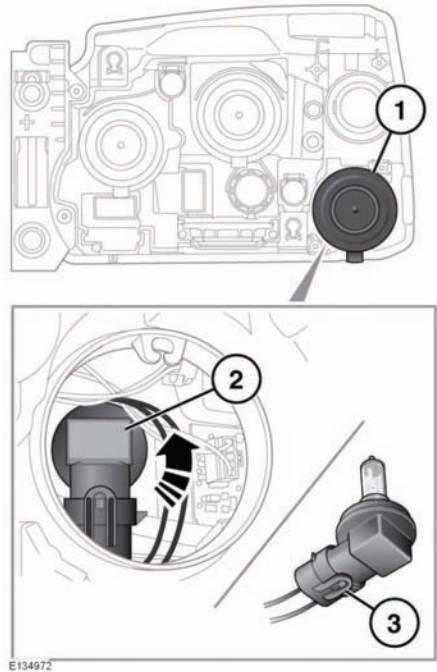
- ⚠ Take care not to touch this type of bulb with your fingers; always use a cloth to handle them. If necessary, clean the bulb with methylated spirits to remove fingerprints.



E134971

1. Twist and lift off the domed cap.
2. Pull off the electrical connector.
3. Release the bulb from the retaining tags and remove bulb.
4. Insert the new bulb and repeat the above procedure in reverse order.

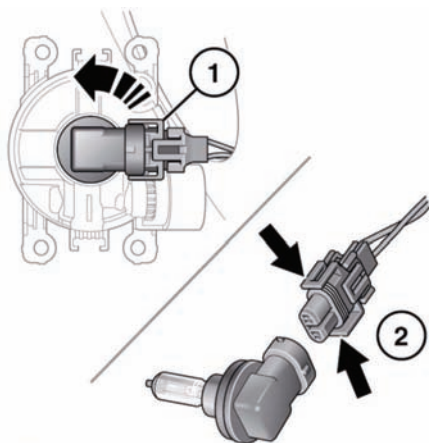
## STATIC BENDING BULB REPLACEMENT



E134972

1. Twist and lift off the domed cap.
2. Rotate bulb holder and release from lamp.
3. Lift the tab and disconnect the electrical connector to remove.

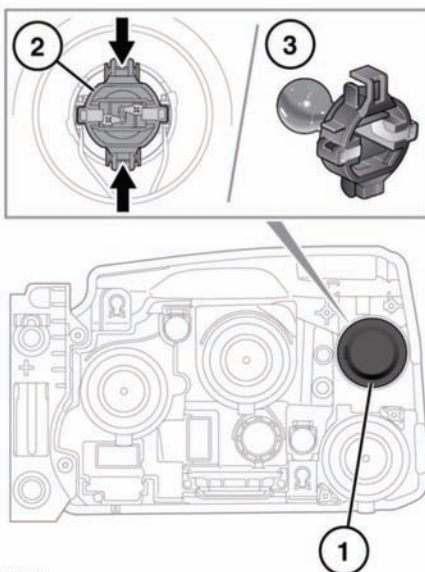
## FRONT FOG LAMP BULB REPLACEMENT



E135156

1. Rotate the bulb holder (anticlockwise) and remove from the lamp unit.
2. Press the two clips together, and remove the electrical connector.

## DIRECTION INDICATOR BULB REPLACEMENT

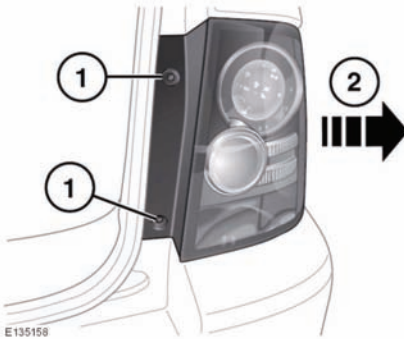


E135157

1. Twist and lift off the cap.
2. Press the catches and pull the bulb holder from the unit.
3. Push and twist to remove the bulb.

## REAR LAMP REMOVAL

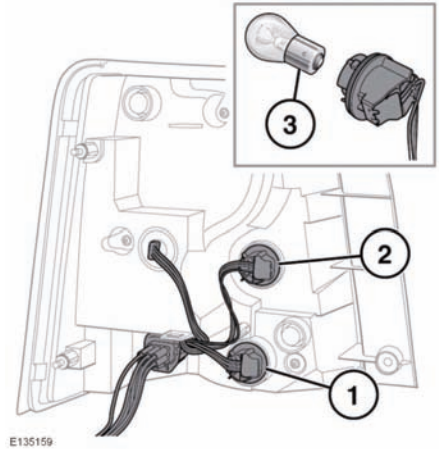
To change any of the rear bulbs, it is necessary to completely remove the lamp unit from the vehicle.



1. With the tailgate open, remove the two screws from the inner edge of the unit.
2. Pull the unit carefully away from the vehicle.
3. Disconnect the electrical connector and remove the unit from the vehicle. Place face down on a flat surface covered in soft material to prevent damage.

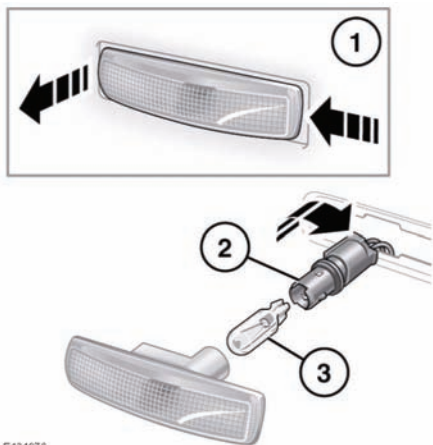
## REAR LAMP - BULB REPLACEMENT

**Note:** The direction indicator lamp, stop lamp, and tail lamp are LED units, and cannot be serviced.



1. Rear fog lamp.
2. Reversing lamp
3. Twist the relevant bulb unit and pull to access the bulb. Push, twist and pull to remove the bulb.

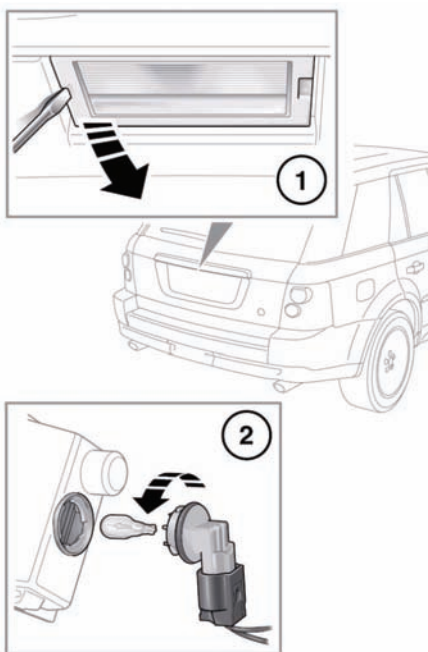
## SIDE REPEATER LAMP BULB REPLACEMENT



E134976

Follow the steps illustrated. Insert a new bulb and refit the components.

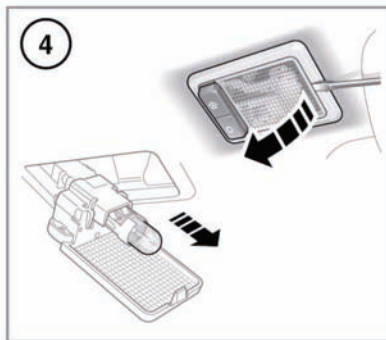
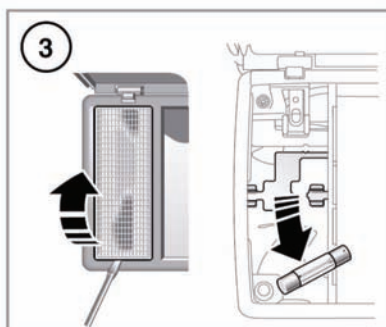
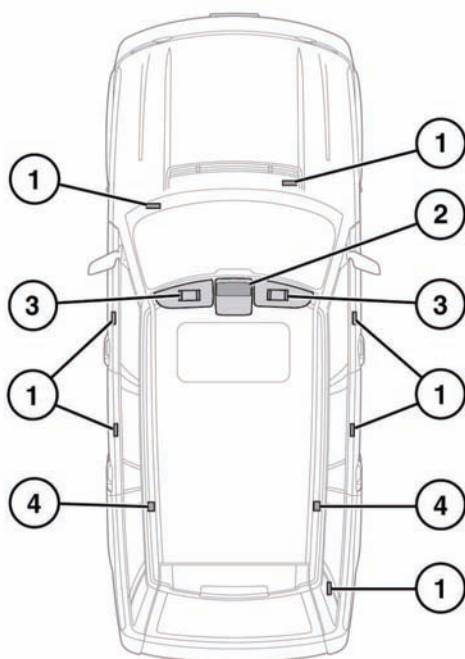
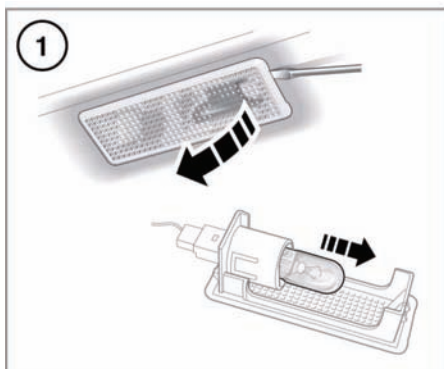
## LICENSE PLATE LAMP BULB REPLACEMENT



E135160

1. Using a small flat-bladed screwdriver, carefully prise the lamp from the tailgate.
2. Twist the bulb holder anticlockwise to unlock then pull to remove. Pull out the bulb to remove.

## INTERIOR LAMP BULB REPLACEMENT



E135289

Follow the steps illustrated. Insert a new bulb and refit the components.

1. Footwell, puddle and loadspace lamps.
2. Courtesy lamp and map lamps.

3. Vanity mirror lamps.
4. Rear courtesy lamps.

## WINDOW RESET

The windows will need to be reset if the battery is disconnected, becomes discharged or power supply is interrupted.

Reset as follows:

1. Close the window fully.
2. Release the switch, then lift it to the close position and hold for 1 second.
3. Repeat the procedure on each window.

## SUNROOF RESET

If the battery is disconnected or the power supply is interrupted whilst the sunroof is partially open, it will need to be recalibrated.

Once the battery is reconnected or the power supply is restored, recalibrate the sunroof as follows:

1. Switch the ignition on.
2. With the sunroof closed, press and release the front of the switch. The sunroof will move to the tilted position.
3. Press the front of the sunroof switch and hold for 20 seconds.
4. After 20 seconds, the sunroof will begin to move. Keep the front of the switch pressed until the fully open/close cycle has completed.
5. Once the sunroof has stopped moving, release the switch.

The sunroof can now be operated as normal.

## PARTS AND ACCESSORIES



**The fitting of non-approved parts and accessories, or the carrying out of non-approved alterations or conversions, may be dangerous and could affect the safety of the vehicle and occupants and also invalidate the terms and conditions of the vehicle warranty.**



**Land Rover will not accept any liability for death, personal injury or damage to property which may occur as a direct result of fitment of non-approved accessories or the carrying out of non-approved conversions to Land Rover vehicles.**

## CLEANING THE EXTERIOR



Remove any heavy deposits of mud and dirt with a hose, before washing the vehicle.



Never aim the water jet directly at the engine air intake, heater air intakes, body seals (doors, sunroof, windows etc.) or at any components which may be damaged (lights, mirrors, exterior trim etc.).



Do not use a power wash system in the engine bay area.



Following cleaning of the vehicle exterior (particularly with a pressure washer), it is recommended that the vehicle is taken for a short drive to dry out the brakes.



Substances which are corrosive, such as bird droppings, can damage the vehicle's paintwork and should be removed as soon as possible.



Use only cleaning products approved for use on vehicles.

- ❗ Do not apply polish to any unpainted areas of bumper mouldings. It will become ingrained in the textured finish.

## UNDER BODY MAINTENANCE

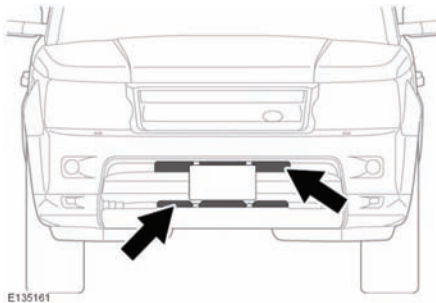
Regularly flush the underbody with plain water, and pay particular attention to areas where mud and debris collect.

If damage or corrosion are detected, have the vehicle checked by a Land Rover Dealer/Authorised Repairer as soon as possible.

## CLEANING AFTER OFF-ROAD DRIVING

- ❗ Ensure that the areas around air intakes and the front grille are clean and clear of debris. Pay particular attention to the lower grille and radiator. Failure to do so may cause the engine to overheat, leading to severe engine damage.

Ensure that the vehicle underside is cleaned as soon as possible after driving off-road.



Using a hose pipe, direct clean water through the front bumper (where shown), to remove mud on the radiator and air conditioning condenser.

## CLEANING THE INTERIOR

- ⚠ Some cleaning products contain substances that are harmful and can cause health problems if used incorrectly and may cause damage to the interior.

## CLEANING FABRIC UPHOLSTERY

- ⚠ Do not polish the instrument panel. Polished surfaces are reflective, and may interfere with the drivers view.

Clean plastic or cloth faced surfaces with warm water and non-detergent soap. Then wipe clean with a soft cloth.

## LEATHER

- ❗ Only use cleaning products specifically designed for use on leather. Do not use chemical, alcohol, or abrasive materials, as they will cause rapid deterioration of the leather. The use of products which are not approved will invalidate your warranty.
- ❗ If you are in any doubt as to which products to use, consult your Land Rover Dealer/Approved Repairer.

Leather should be cleaned and protected at least every six months.

To prevent ingrained dirt and staining, inspect the seat upholstery regularly, and clean every 1 to 2 months as follows:

1. Wipe off fine dust from the seat surfaces using a clean, damp, non-coloured cloth. Avoid over wetting the leather.
2. If this is not sufficient, use a cloth which has been dampened with warm soapy water and then wrung out. Use only mild non-caustic soap.



3. Use Land Rover leather cleaner for heavily soiled areas. Dry off and rub the with a clean soft cloth, changing surfaces regularly.

Use Land Rover leather cleaner several times a year to maintain the leather's suppleness and appearance. The cleaner will nourish and moisturise and help to improve the surface protection film against dust and substances.

- Dark clothing may stain leather seats just like other upholstery products.
- Sharp objects such as belts, zippers, rivets etc can leave permanent scratches and scratch marks on the leather surface.
- Unless spillages such as tea, coffee or ink are washed away immediately, permanent staining may have to be accepted.

If a valet service is used, ensure that the specialist concerned is aware of, and follows, these instructions precisely.

**Note:** *Some materials/fabrics are prone to dye transfer, which can cause unsightly discolouration of lighter coloured leathers. Affected areas should be cleaned and re-protected as soon as possible.*

### SEAT BELTS



**Do not allow any water, cleaning products, or fabric from cloths to enter the seat belt mechanism. Any substance which enters the mechanism may affect the performance of the seat belt in an impact.**

Extend the seat belts fully, then use warm water and a non-detergent soap to clean. Allow the seat belts to dry naturally whilst fully extended.

**Note:** *Whilst cleaning the seat belt, take the opportunity to examine the webbing for damage/wear. Any wear or damage should be reported to, and rectified by, a Land Rover Dealer/Approved Repairer.*

### AIRBAG MODULE COVERS



**Airbag covers should only be cleaned using a slightly dampened cloth, and a small amount of upholstery cleaner.**



**Do not allow the airbag covers, or surrounding areas, to become contaminated with liquids. Any substance which enters the mechanism can prevent correct deployment of an airbag during an impact.**

### CLEANING THE TOUCH SCREEN

- Clean with a lightly moistened cloth.
- Do not use chemical agents or domestic cleaners.
- To prevent errors occurring, ensure that only one finger at a time is in contact with the screen.
- Do not use excessive pressure.
- Do not allow sharp, hard or abrasive objects to make contact with the screen.
- Avoid exposing the screen to direct sunlight for long periods.