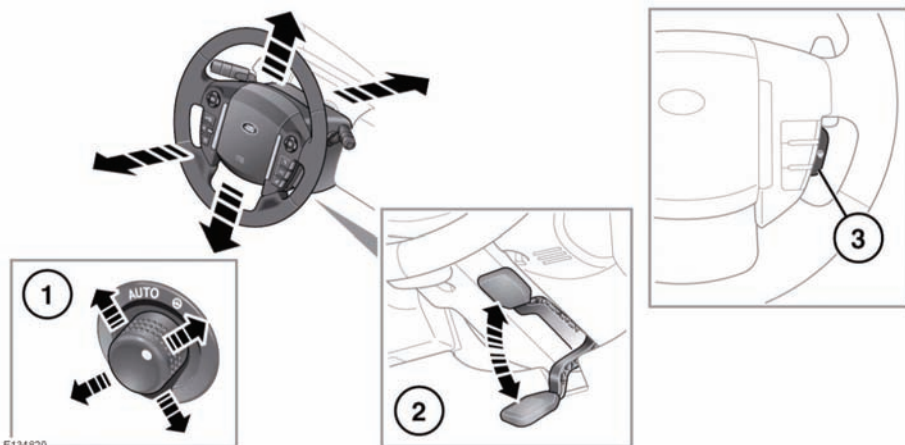


ADJUSTING THE STEERING WHEEL



Never adjust the steering column while the vehicle is in motion.

1. **Electric adjustment:** Move the control up or down to adjust the tilt/height.

Move the control forwards or rearwards to adjust reach.

2. **Manual adjustment:** Move the locking lever (located under the column) downwards to unlock. Move the steering column up, down, in or out, to the desired position.

Move the lever fully up to re-lock the column.

3. **Heated steering wheel:** Press to turn on and off. The switch indicator will illuminate amber when heating is on.

When heating is off, the indicator illuminates green (with headlamps on) or does not illuminate (with headlamps off).

ENTRY AND EXIT MODE

With the steering column control (1) in the **AUTO** position, the steering column and driver's seat will move to provide easier entry and exit from the vehicle.

On opening the driver's door the system will raise the steering column to the highest position, and lower the driver's seat to the lowest position assisting with exit from the vehicle. When the driver's door is closed and the ignition turned on, the system will return the driver's seat and steering column to the previous position.

Note: If the driver's seat or steering column are adjusted during entry or exit operation, automatic movement will stop.

To prevent automatic movement of the driver's seat and steering column, turn the control clockwise to the manual position.

Note: If the steering column switch is moved away from **AUTO** when the driver's seat and steering column is in the exit position, the driver's seat and steering column will move back to their previous positions when the driver's door is closed and the ignition is switched on.