




DISCOVERY SPORT


OWNER'S HANDBOOK SUPPLEMENT

The following information relates to Discovery Sport and supplements the information in the Owner's handbook.

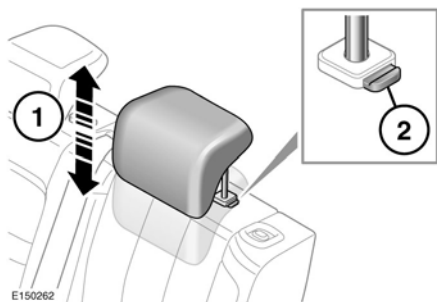
Publication Part No. LSA 10 02 63 161

REAR HEAD RESTRAINTS

 Adjust the head restraint so that the top of the head restraint is above the centre line of the head. An incorrectly adjusted head restraint increases the risk of death or serious injury in the event of a collision.

 Do not drive or carry passengers with the head restraint removed from an occupied seat. The absence of a correctly adjusted head restraint increases the risk of neck injury in the event of a collision.

Fixed seat



1. To raise, pull the head restraint upwards to the uppermost position. The head restraint will lock in this position.
2. To lower, press the button on the stem collar in and push down on the head restraint.

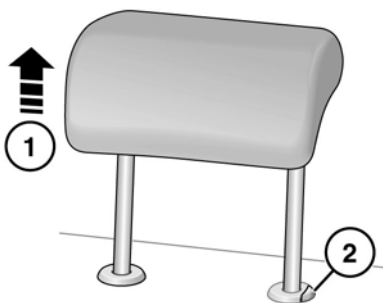
The head restraints can be removed, if required (e.g., to fit larger child seats).

To remove a head restraint, first raise the head restraint to its uppermost position. With the adjusting collar pressed in, lift the restraint out of the seatback.

 Always store a removed head restraint securely.

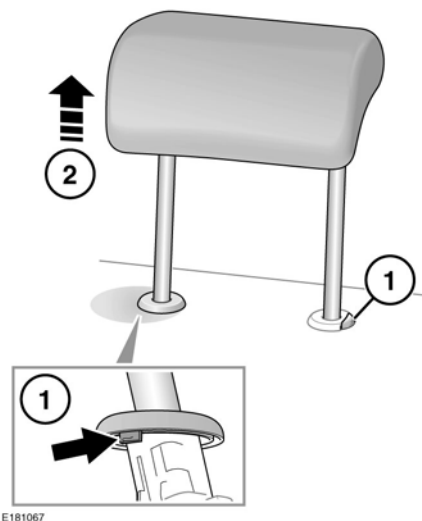
To refit a head restraint, make sure that it is facing the correct direction. Insert the stems of the head restraint into the sockets and push it downwards until at least the first click.

Sliding seat



E181066

1. To raise, pull the head restraint upwards to the uppermost position. The head restraint will lock in this position.
2. To lower, press the button on the stem collar in and push down on the head restraint.



E181067

The head restraints can be removed, if required (e.g., to fit larger child seats).

Note: Two people are required for this operation.

To remove a head restraint:

1. With the head restraint in the fully raised position, press the *release tag below the stem collar. At the same time, press the button on the other stem collar.

*To locate the release tag, press down on the seat material in the area shown on the illustration.

2. A second person is now required to lift out the head restraint.

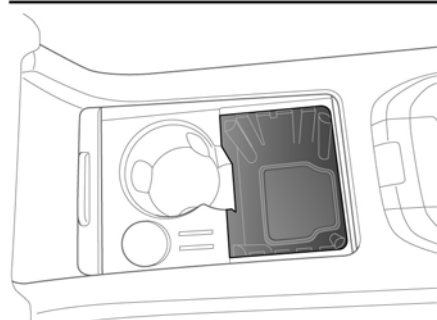
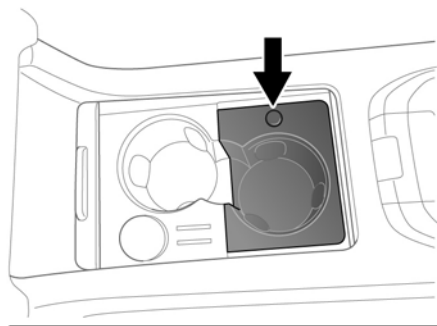


Always store a removed head restraint securely.

To refit a head restraint, make sure that it is facing in the correct direction. Insert the stems of the head restraint into the stem collars and push it downwards.

HIDDEN STORAGE COMPARTMENT

There is a hidden storage compartment underneath the front cup holder on the centre console. To access the storage compartment:



SL3241

Press the button on the top of the front cup holder.

Lift and remove the cup holder to reveal the hidden storage compartment.

Replace the cup holder and gently push down to secure.

USING THE PROGRESS CONTROL SYSTEM

For vehicles with Progress control and Hill Descent Control (HDC), the HDC button will perform multiple functions, i.e., enable/disable and alternate between Progress control and HDC.

With both features switched off, the button sequence is as follows:

1. Press and release the button to enable Progress control. A warning lamp will illuminate in the Instrument panel to confirm. See 'PROGRESS CONTROL SYSTEM (AMBER)' in the Owner's handbook.
2. Within 4 seconds, press and release the button again to enable HDC. A warning lamp will illuminate in the Instrument panel to confirm. See 'HILL DESCENT CONTROL (GREEN)' in the Owner's handbook.

Note: *If the second press of the button is after 4 seconds, Progress control will be switched off. If required, start the sequence again.*

3. When required, press and release the button to disable. The relevant warning lamp will extinguish to confirm.

HDC CONTROLS

Note: *Depending on the vehicle's specification, the HDC button will also operate the Progress control system. See 'USING THE PROGRESS CONTROL SYSTEM'.*