

Locks

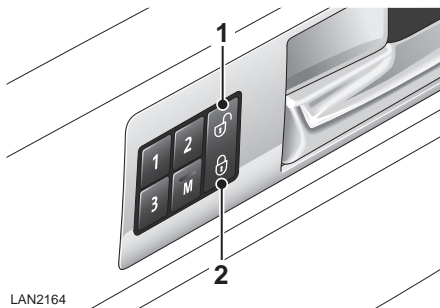
LOCKING AND UNLOCKING

Locking and unlocking the vehicle using the Smart Key, is explained earlier in this handbook. See **USING THE SMART KEY** (page 14).

Locking and unlocking the vehicle using the Keyless Entry system is explained later in this handbook. See **KEYLESS ENTRY** (page 23).

Note: If any door or the tailgate is unlocked 10 times within a short period, the latch is disabled for approximately one minute.

Master lock and unlock switches



1. Press the unlock switch to unlock all the doors.
Note: The switch is inhibited when the vehicle is locked with Smart Key.
2. Press the lock switch to lock all the doors.

Drive-away locking

Drive-away locking automatically locks all the doors when the vehicle speed exceeds 8 km/h (5 mph).

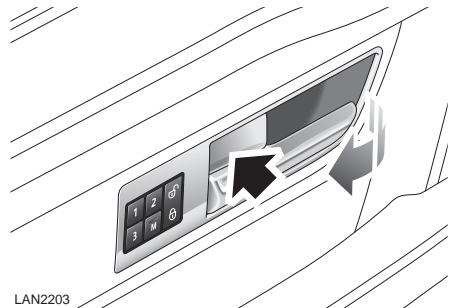
This feature can be disabled via the **Vehicle Set-up** menu. See **VEHICLE INFORMATION AND SETTINGS MENU** (page 37).

Note: Pressing the master lock or unlock switch will override the speed locking function for the journey.

Automatic unlocking

If the vehicle is involved in a collision which causes a restraints device to deploy, all door locks will automatically be unlocked, the hazard warning lamps will flash and the interior lamps will illuminate.

Interior door handles and door locking levers



From inside the vehicle, all the doors can be locked by pressing either the driver or passenger lock lever (arrowed).

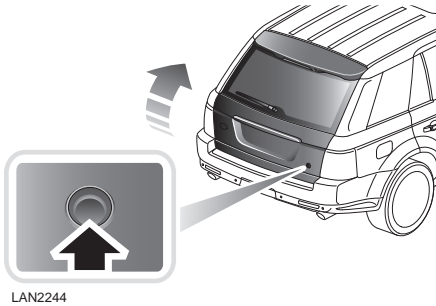
Each rear door can be individually locked by pressing the appropriate lever.

To open and unlock a front door, pull the door handle.

To open a rear door, first return the locking lever to its unlocked position, then pull the door handle.

Locks

Opening the tailgate



LAN2244

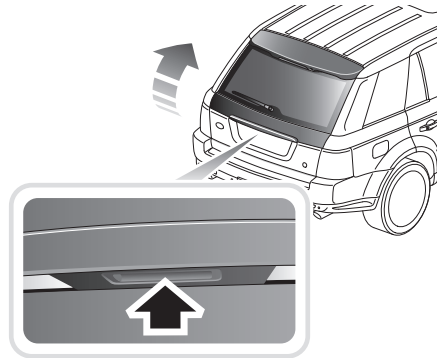
With all doors unlocked, press the tailgate release button on the right-hand side of the tailgate.

Note: *If the tailgate is open, the system prohibits the tailglass release, and vice versa. It will only accept another release when the open panel has been closed.*

Power closure

The tailgate incorporates a power closure feature, which removes the need to 'slam' the tailgate when closing.

Tailglass

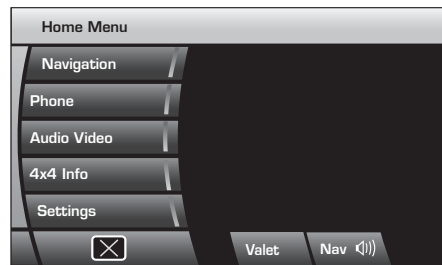


LAN2245

With all doors unlocked, press the touch pad on the underside of the exterior handle and pull to open.

VALET MODE

Dependent upon specification, your vehicle may have a valet mode parking feature. Once activated, valet mode allows the vehicle to be driven by a parking attendant, but prevents access to the luggage compartment and use of the touch-screen.



LAN2349

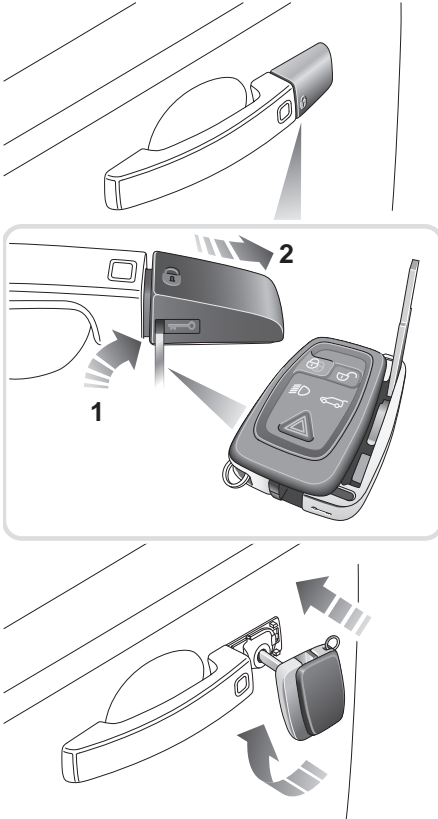
Valet mode can be selected by touching the **Valet** icon on the touch screen **Home Menu**. See **VEHICLE SETTINGS** (page 281).

Locks

USING THE EMERGENCY KEY BLADE

The emergency key blade will be needed to unlock the vehicle, if the Smart Key has a discharged battery or is damaged. Withdraw the key from the Smart Key for use.

Locking and unlocking the doors



LAN2246

Remove the front left-hand door lock cover as follows:

1. Insert the emergency key blade into the slot on the underside of the cover.
2. Gently lever the key blade upwards.

3. Carefully twist the key blade, to lever the cover off the retaining clips.

Insert the key blade into the exposed lock to operate.

Note: To refit the door lock cover, push it firmly back into place until it clicks into position.

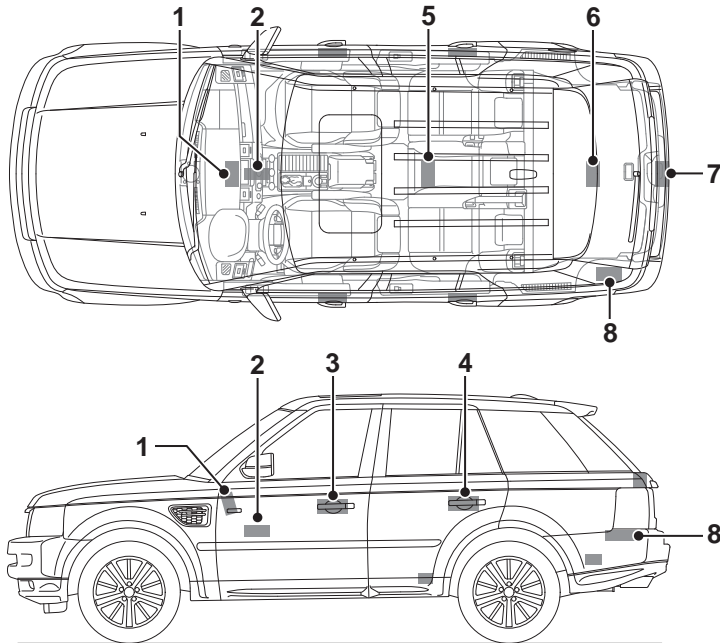
To unlock: Turn the key blade towards the rear of the vehicle and release. If the security system is disarmed, all doors and the luggage compartment will be unlocked. If the security system is armed, only the front left-hand door will unlock.

If the vehicle is unlocked using the emergency key blade with the security system armed, the alarm will sound when the door is unlocked. To deactivate the alarm, press the unlock button on the Smart Key or press the engine START/STOP button with the Smart Key inside the vehicle.

To lock: Ensure all the doors are closed, then turn the key blade towards the front of the vehicle and release. This will lock all doors but will not arm the alarm.

Locks

SMART KEY SYSTEM TRANSMITTERS



LAN2247

1. Cabin front transmitter
2. Keyless start module
3. Front exterior door handle transmitters
4. Rear exterior door handle transmitters
5. Cabin rear transmitter
6. Luggage compartment interior transmitter
7. Luggage compartment exterior transmitter
8. Left-hand side loadspace transmitter

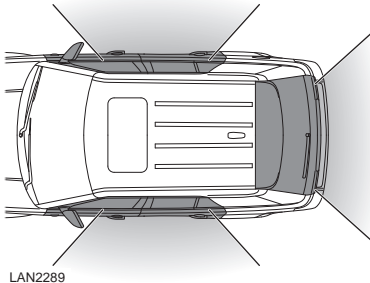
WARNING



Any person fitted with an implanted medical device should ensure that the device is kept at a distance of at least 22 cm (8.7 inches) away from any transmitter mounted in the vehicle. This is to avoid any possibility of interference between the system and device.

Locks

KEYLESS ENTRY



Keyless entry allows the driver to unlock and disarm the vehicle by simply operating any door handle. The Keyless Entry function operates in the following manner:

- As a door handle is operated, the vehicle emits a search signal.
- If the Smart Key is within approximately 1.0 m (3 feet) of the operated door handle, the signal will be acknowledged.
- The vehicle recognises the Smart Key and disarms the alarm and unlocks the vehicle according to the current security setting (either Single-point or Multi-point entry).
The hazard warning lamps flash twice as confirmation (in some markets an audible warning will sound twice).

Note: The Smart Key needs only to be on the driver's person or in a non-metallic bag or briefcase. It does not need to be exposed or handled.

Note: If Single-point entry is the current security setting and a door other than the driver's door is opened first, then all doors will be unlocked. If the driver's door is opened, only the driver's door will be unlocked. All other doors and the luggage compartment will remain locked.

Smart Key check

When the stop/start switch is pressed, the vehicle will search for a valid Smart Key. If one is not found, **Smart Key Not Found** will be displayed for four seconds in the message centre. This is to alert the driver that the Smart Key may have been inadvertently removed from the vehicle.

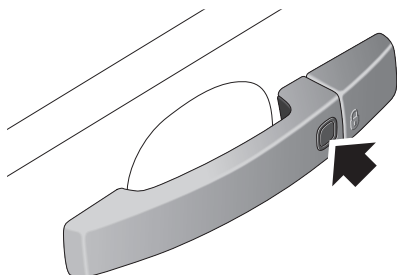
Locks

KEYLESS LOCKING

WARNING



Never double-lock the vehicle with people, children or pets inside. In the event of an emergency they would be unable to escape and the emergency services would be unable to release them quickly.



LAN2290

The vehicle will not lock automatically.

The vehicle will only lock if all doors, luggage compartment and bonnet are closed. If a lock attempt is made with an open aperture, the vehicle will not lock and two audible error warnings will sound.

- To single-lock the vehicle, press the button on the door handle once. The hazard warning lamps will flash once as confirmation (in some markets, an audible warning will sound).
- To double-lock the vehicle, press the button twice within three seconds. The hazard warning lamps will flash twice (with a long second flash). In some markets, a double audible warning will sound.

Note: Keyless locking will only activate when the Smart Key is detected outside the vehicle. If no Smart Key is present when the button is pressed, two warning tones will sound.

Window global closing

Press and hold the button on the door handle for three seconds, to lock the vehicle, arm the alarm and also close all open windows. The windows will stop closing when the button is released.

STEERING COLUMN LOCK

CAUTION



During vehicle recovery, the Smart Key must remain inside the vehicle, so that the steering column remains unlocked.

Your vehicle is fitted with an electronic steering column lock. The column unlocks when it detects a Smart Key inside the vehicle.

Any malfunction of the steering column lock will be indicated by the message **STEERING COLUMN LOCKED** displaying in the message centre. If this occurs:

1. Lock and then unlock the vehicle using the Smart Key.
2. Try again to unlock the steering column lock, by turning the steering wheel gently to the left and right.
3. If the malfunction still persists, seek qualified assistance immediately.